

EUROSTUDENT V

Key results on the social dimension in higher education in Europe

Kristina Hauschildt
Barcelona
11th March 2015



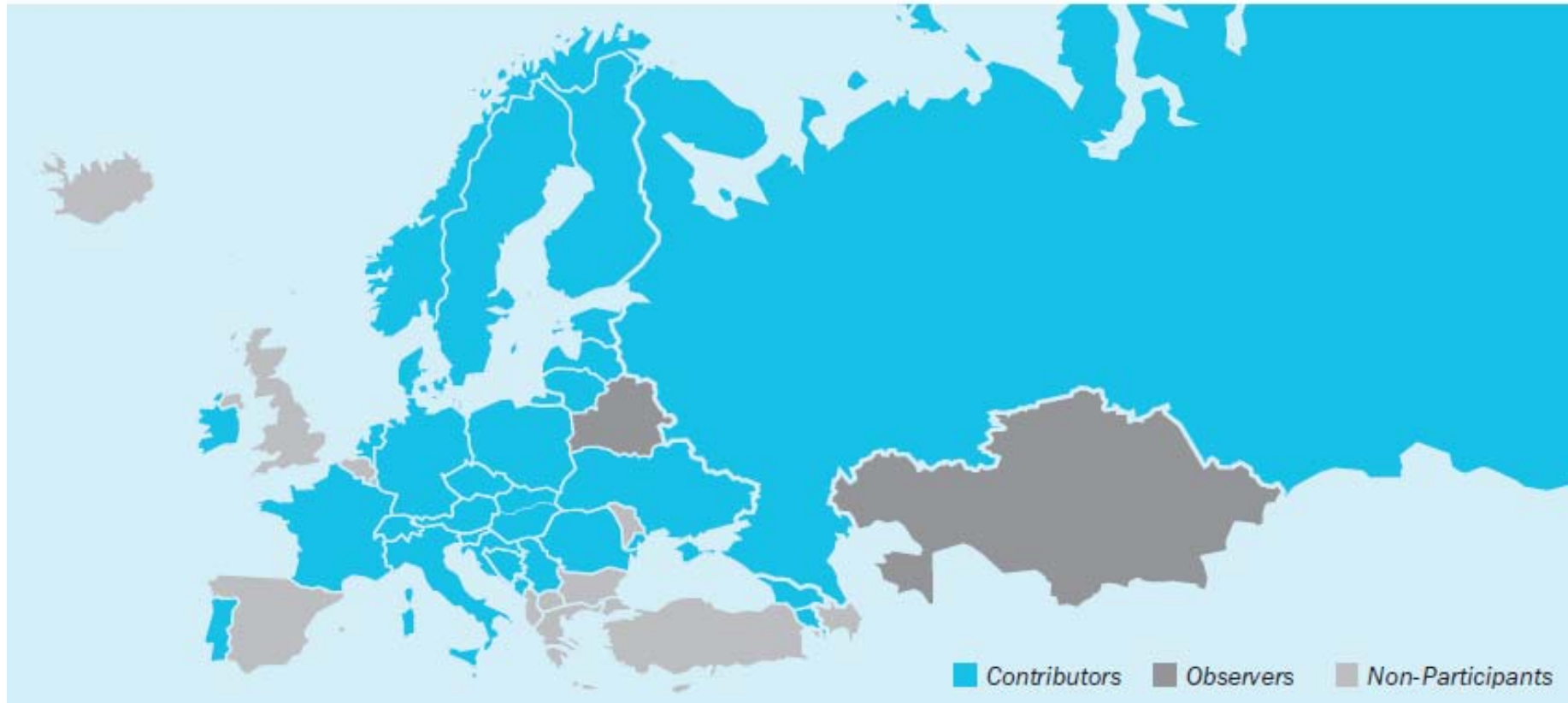
Lifelong
Learning
Programme

eurostudent.eu
★★★★★

DZHW

Deutsches Zentrum für
Hochschul- und Wissenschaftsforschung

The EUROSTUDENT network



The EUROSTUDENT network

EUROSTUDENT is an international network consisting of

- **30 countries in the EHEA**
 - 29 data contributors | 2 observing countries | 4 „pilot“ countries
- **Organisations from 7 countries directly involved in the Consortium**
- **3 European-level organisations & 5 ministries/ country representatives in the Steering Board**



Contributors Observers Non-Participants

Basic principles

Relevance

- Working groups with external participation
- Reference to on-going discussions

Comparability

- Core questionnaire
- Handbooks on data cleaning & delivery
- Standard target group

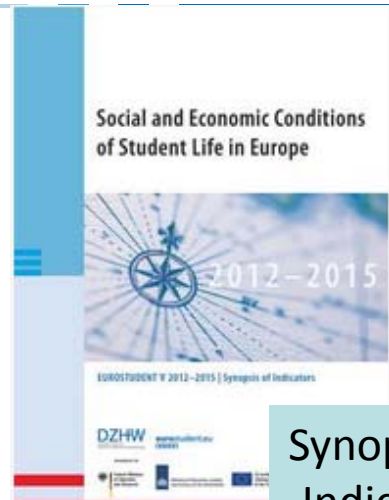
Interpretation

- National comments
- National profiles

Accessibility

- Different reporting formats
- Publicly available data

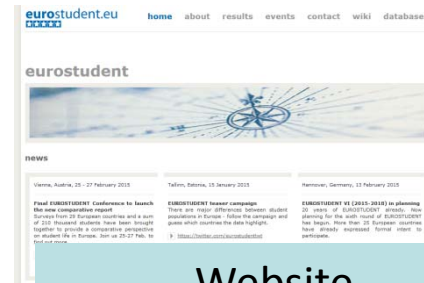
Different formats for different purposes



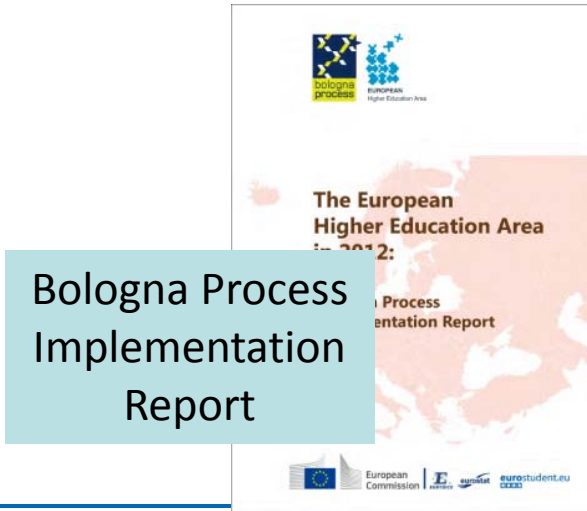
Synopsis of Indicators



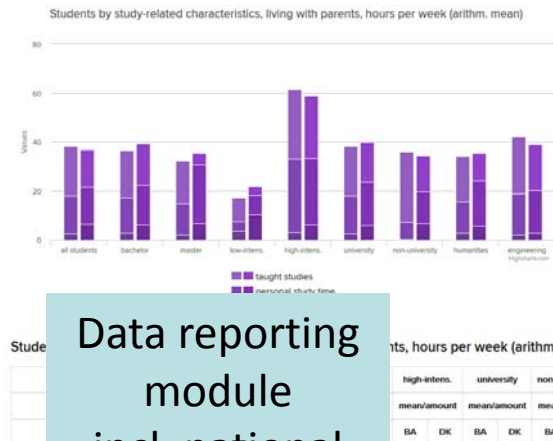
Intelligence Briefs



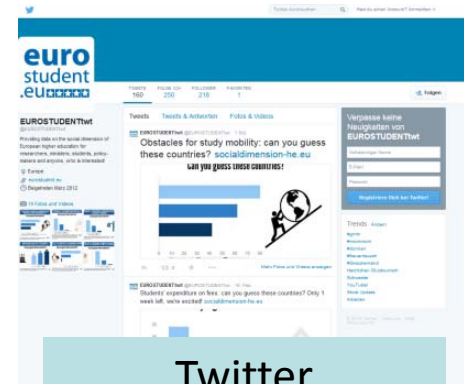
Website www.eurostudent.eu



Bologna Process Implementation Report



Data reporting module incl. national profiles

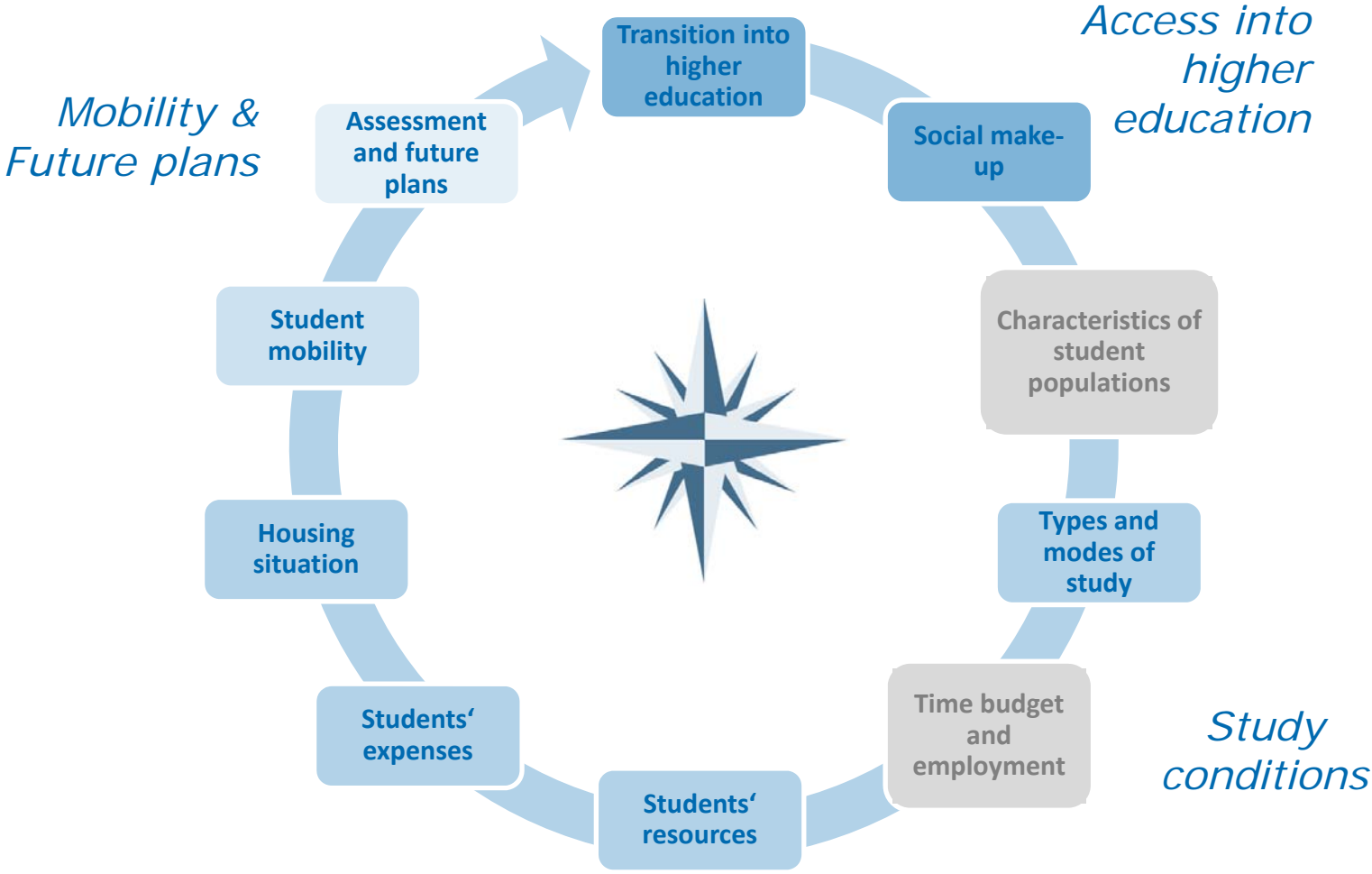


Twitter EUROSTUDENTtwt

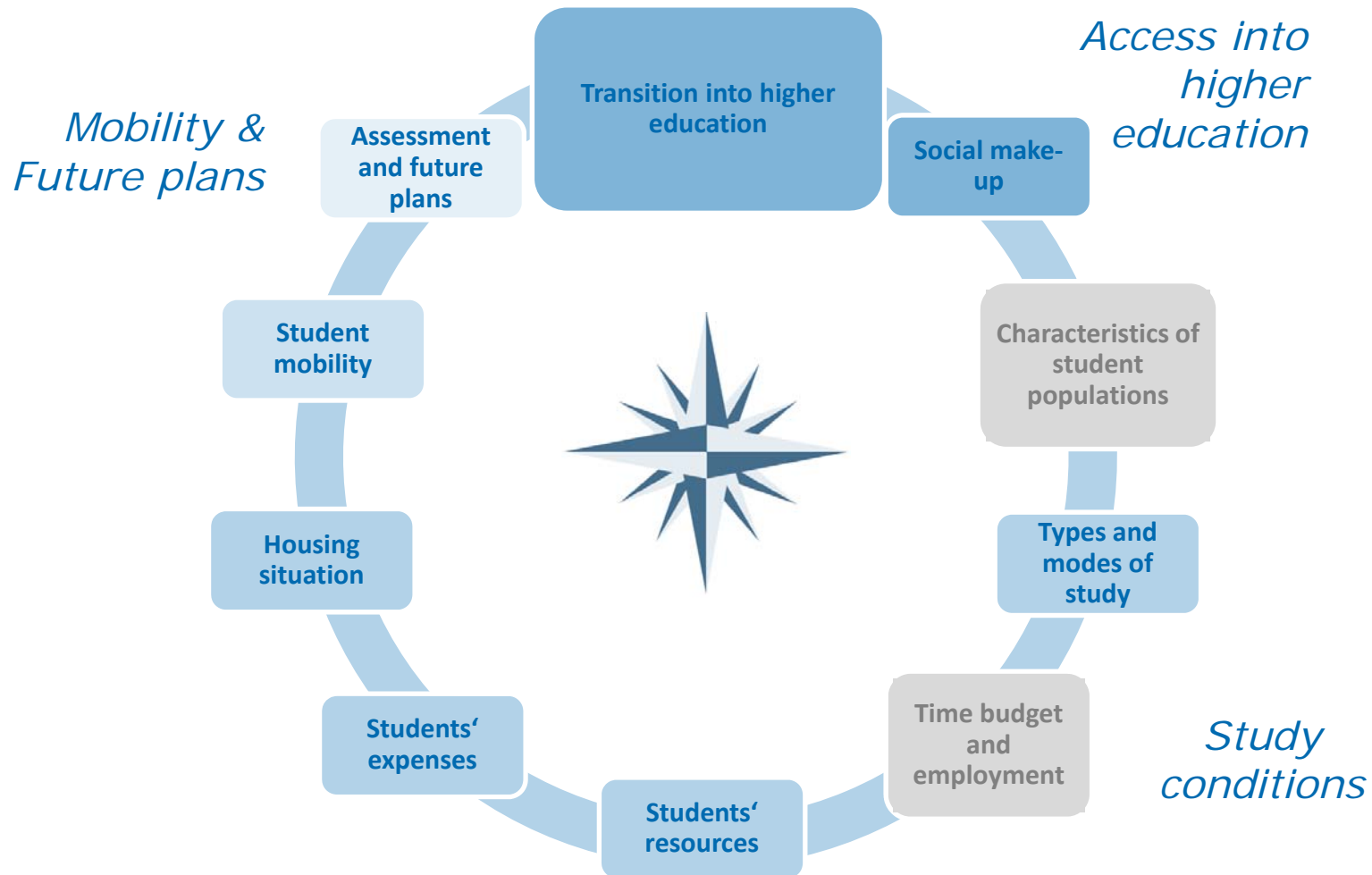
Synopsis of Indicators



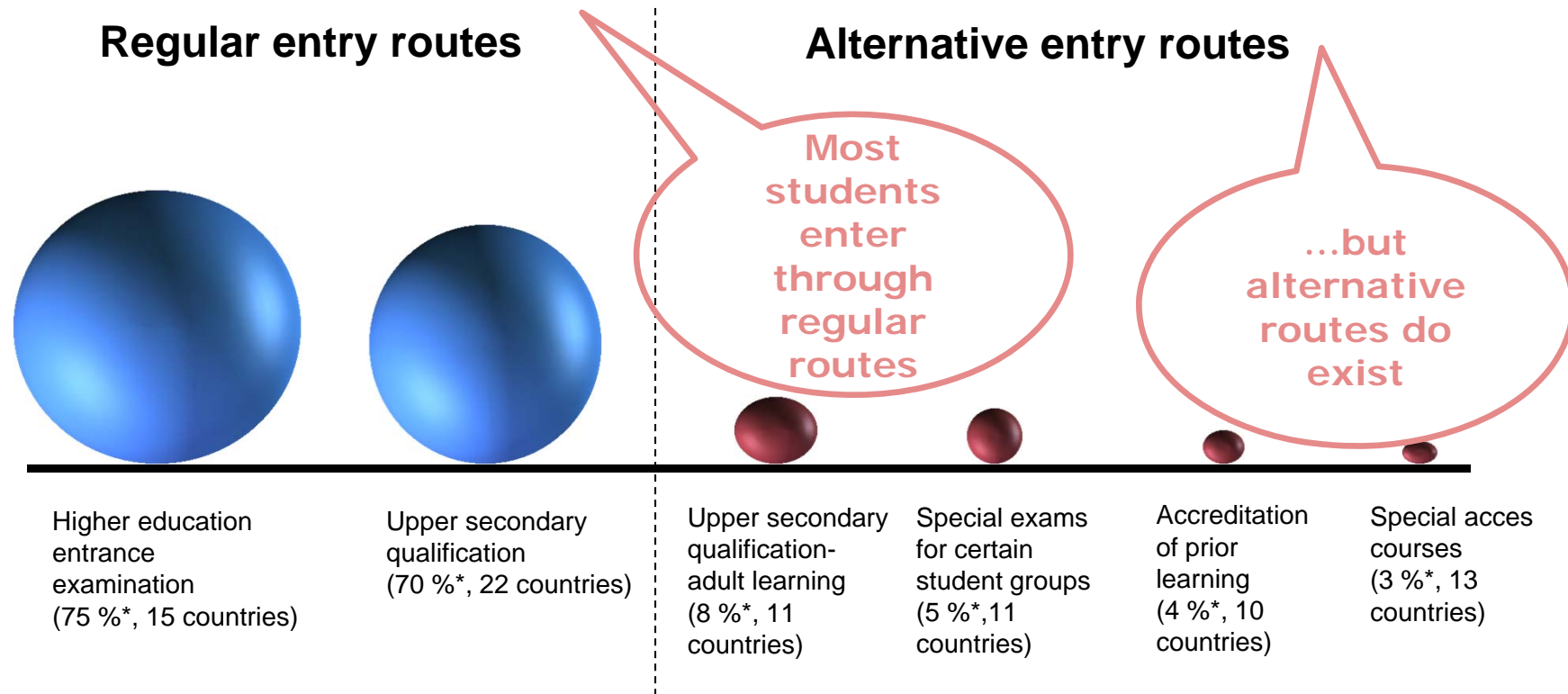
Synopsis of Indicators



Synopsis of Indicators



Overview of access routes to higher education



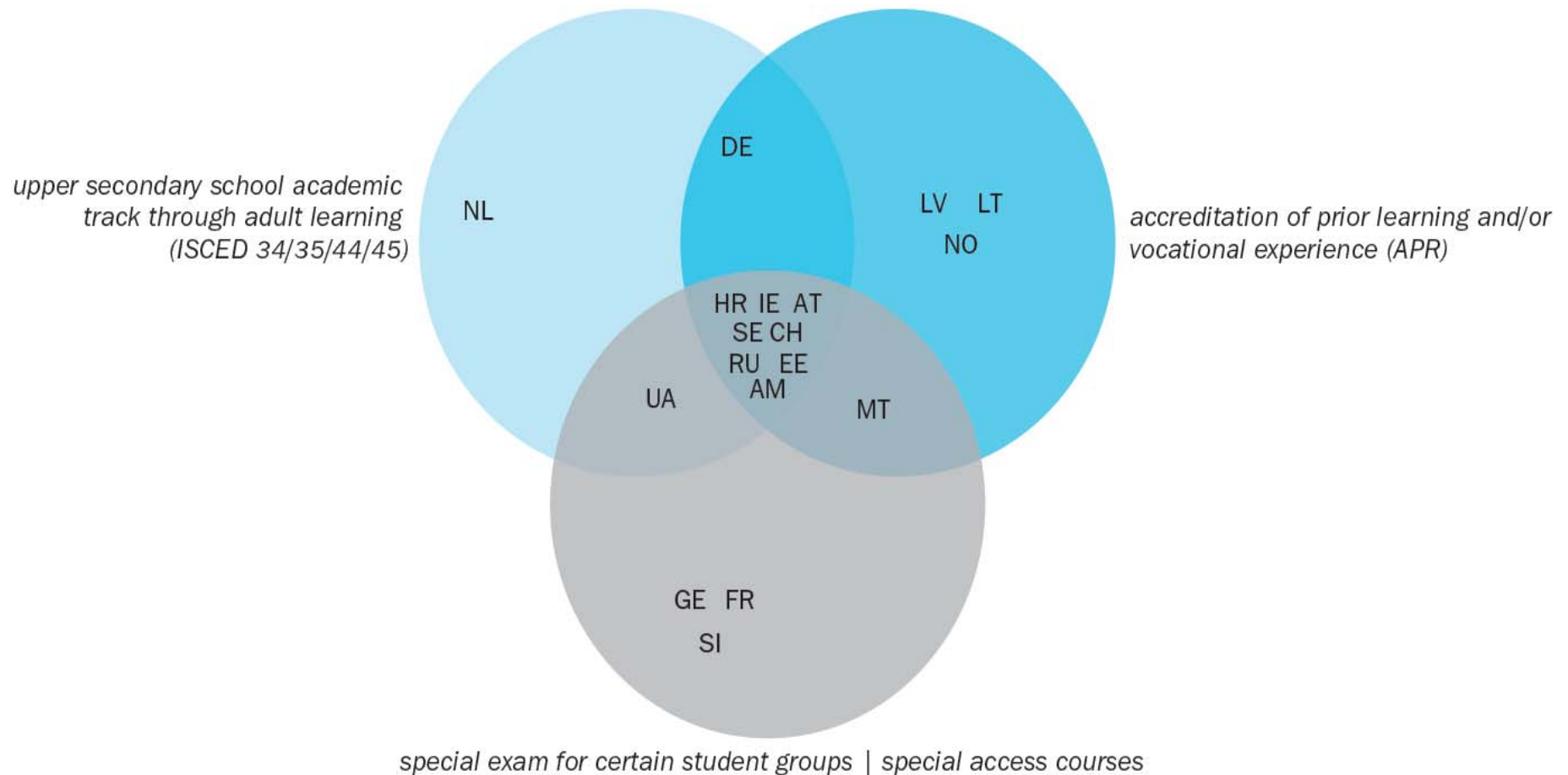
Notes:

The question on students' access routes provided multiple response options, so that students may have combined different routes to enter higher education.

*Unweighted average

Source: Hauschildt et al. (2015)

Alternative access routes in EUROSTUDENT countries



Source: Hauschildt et al. (2015)

Alternative access routes in EUROSTUDENT countries

More students entering through alternative routes can be found...

- ...among students without HE background

upper secondary school academic
track through adult learning
(ISCED 34/35/44/45)

- ...among older students

accreditation of prior learning and/or
vocational experience (APR)

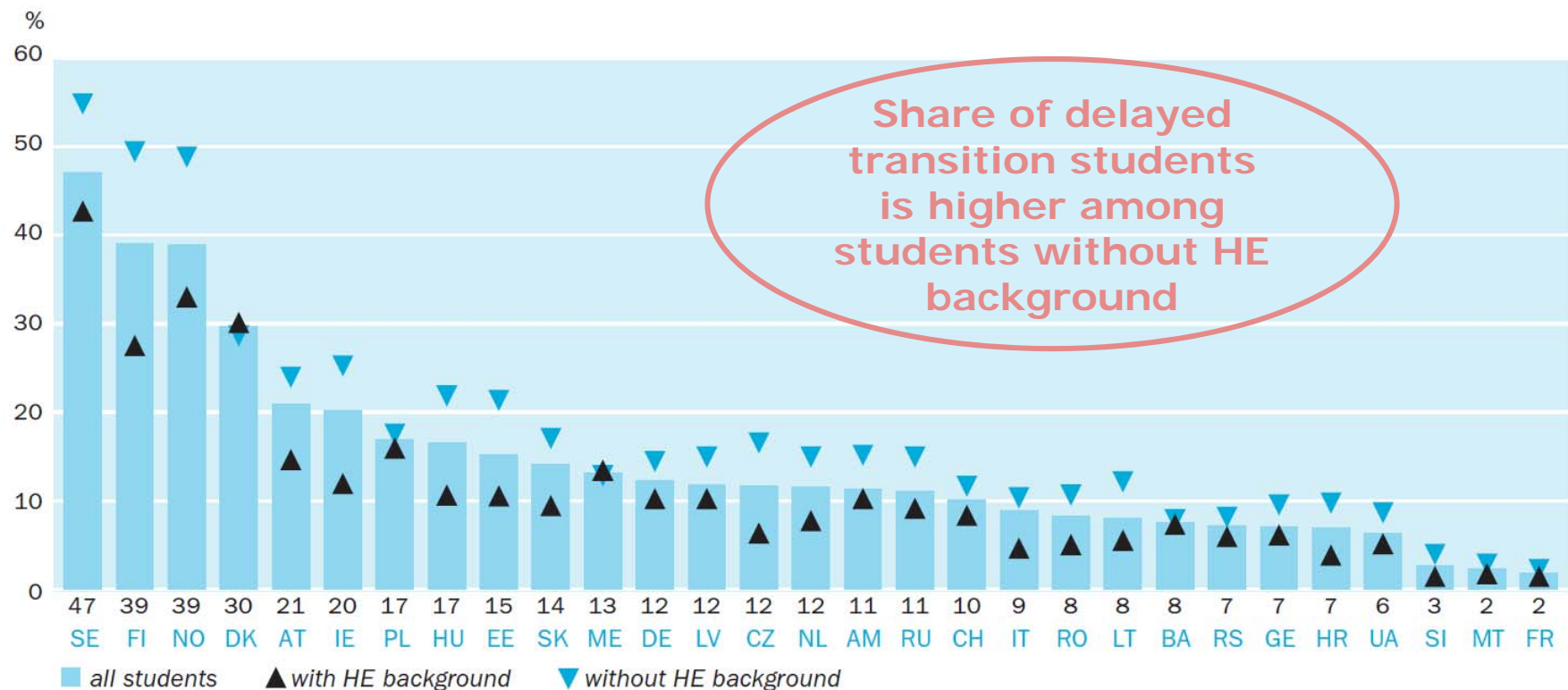
- ...among delayed transition students (delay >24 months)

special exam for certain student groups | special access courses

Source: Hauschildt et al. (2015)

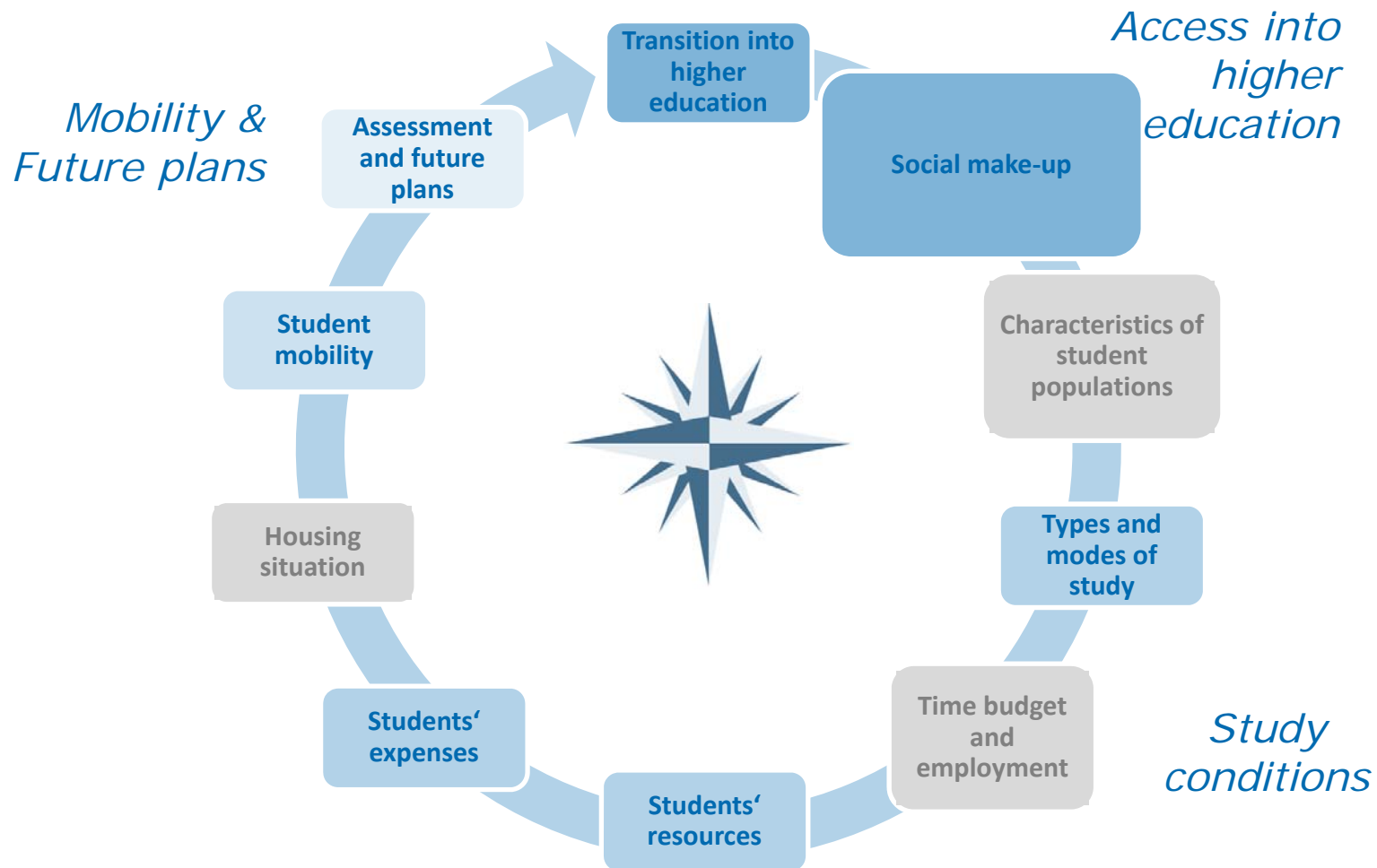
Delayed transition students

Share of students with a time delay of more than 24 months between leaving school and entering higher education (in %)



Source: Hauschildt et al. (2015)

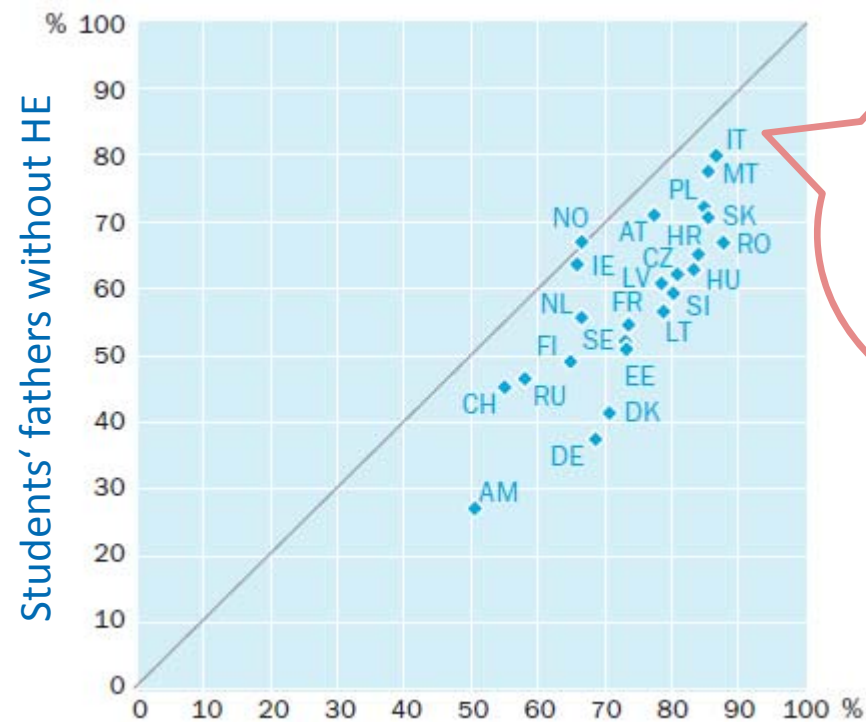
Synopsis of Indicators



Participative equity

Representation of students without HE background

Based on fathers' educational attainment



Under-representation of students without HE background in almost all countries

Men in the population aged 40-59 without HE (potential student fathers)

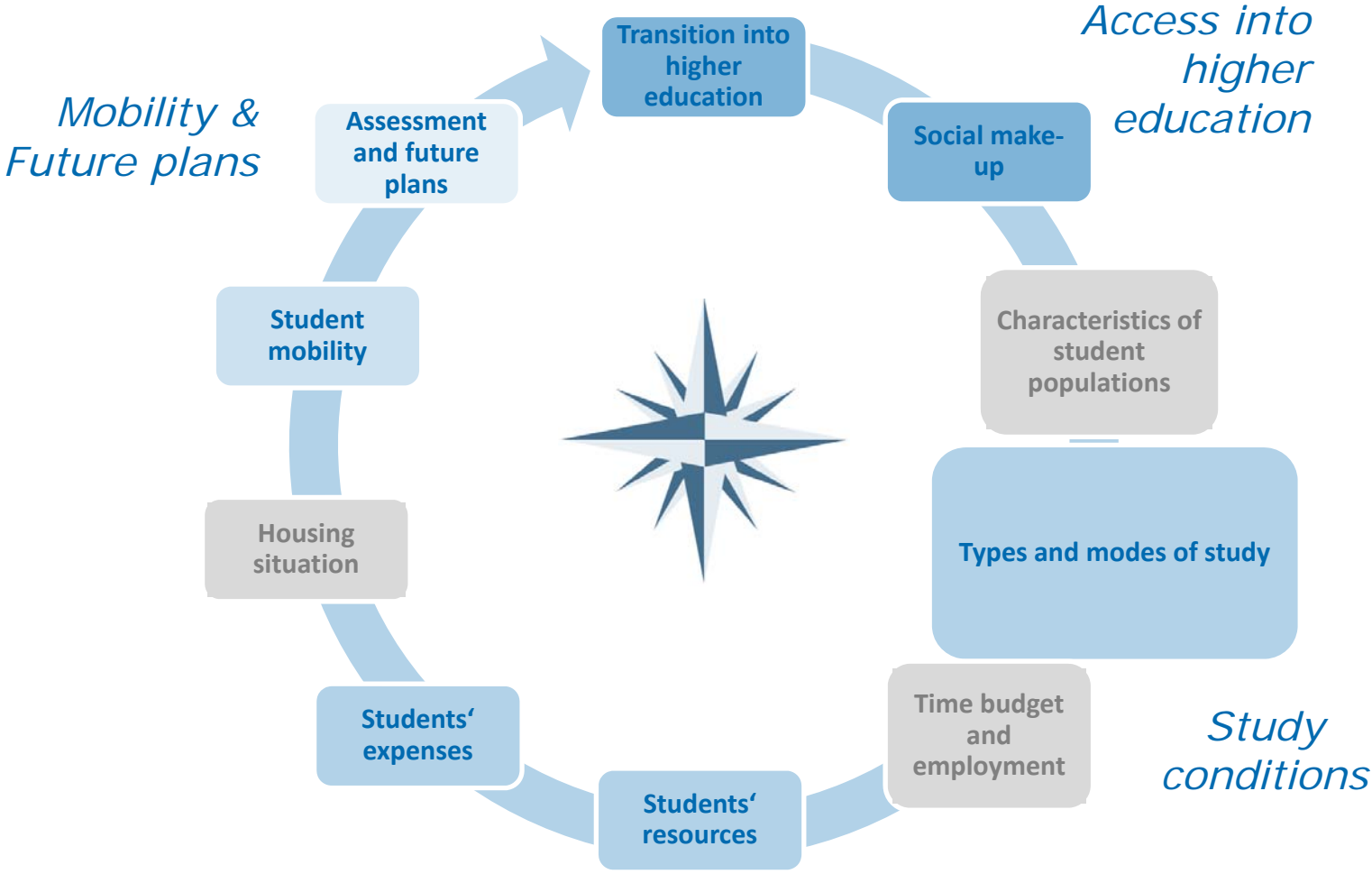
Source: Hauschildt et al. (2015)

Do students without HE background study differently?

Students without HE background...

- ...more often have a delayed entry into higher education
- ...are older than students without HE background
- ...favor non-universities over universities
- ...tend to be better represented in BA than in MA programmes
- ...tend to prefer engineering over humanities subjects

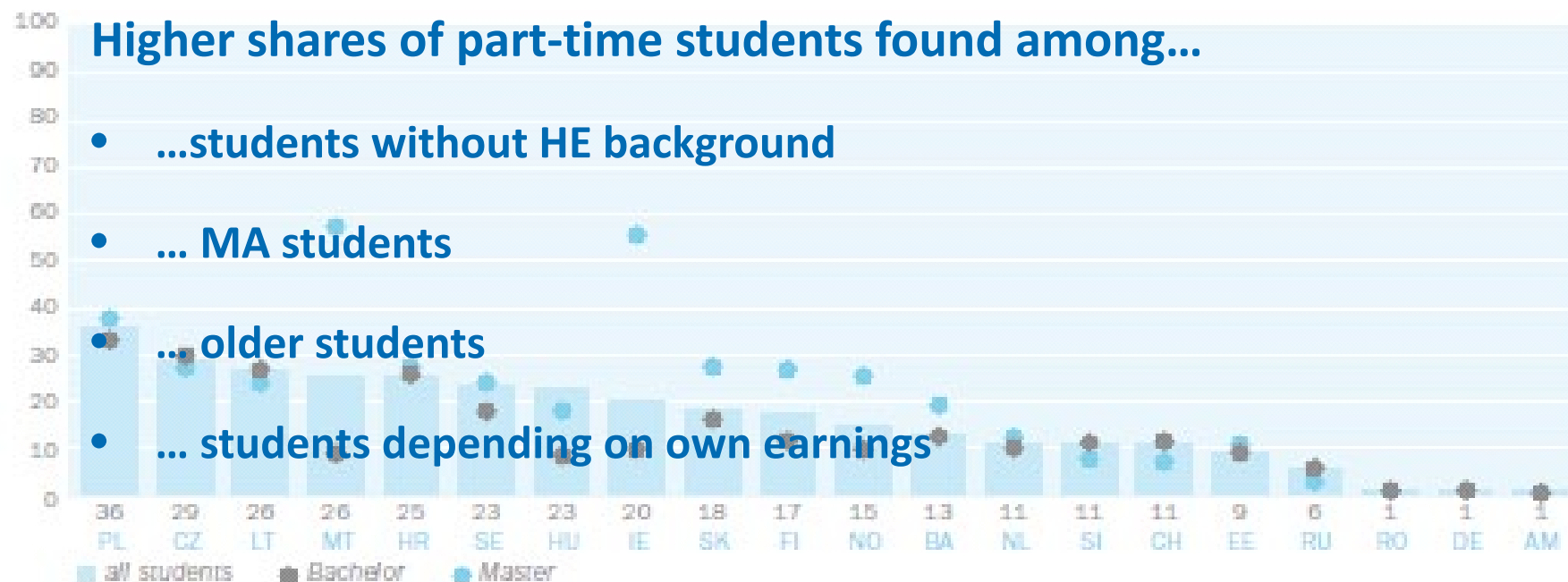
Synopsis of Indicators



Part-time students

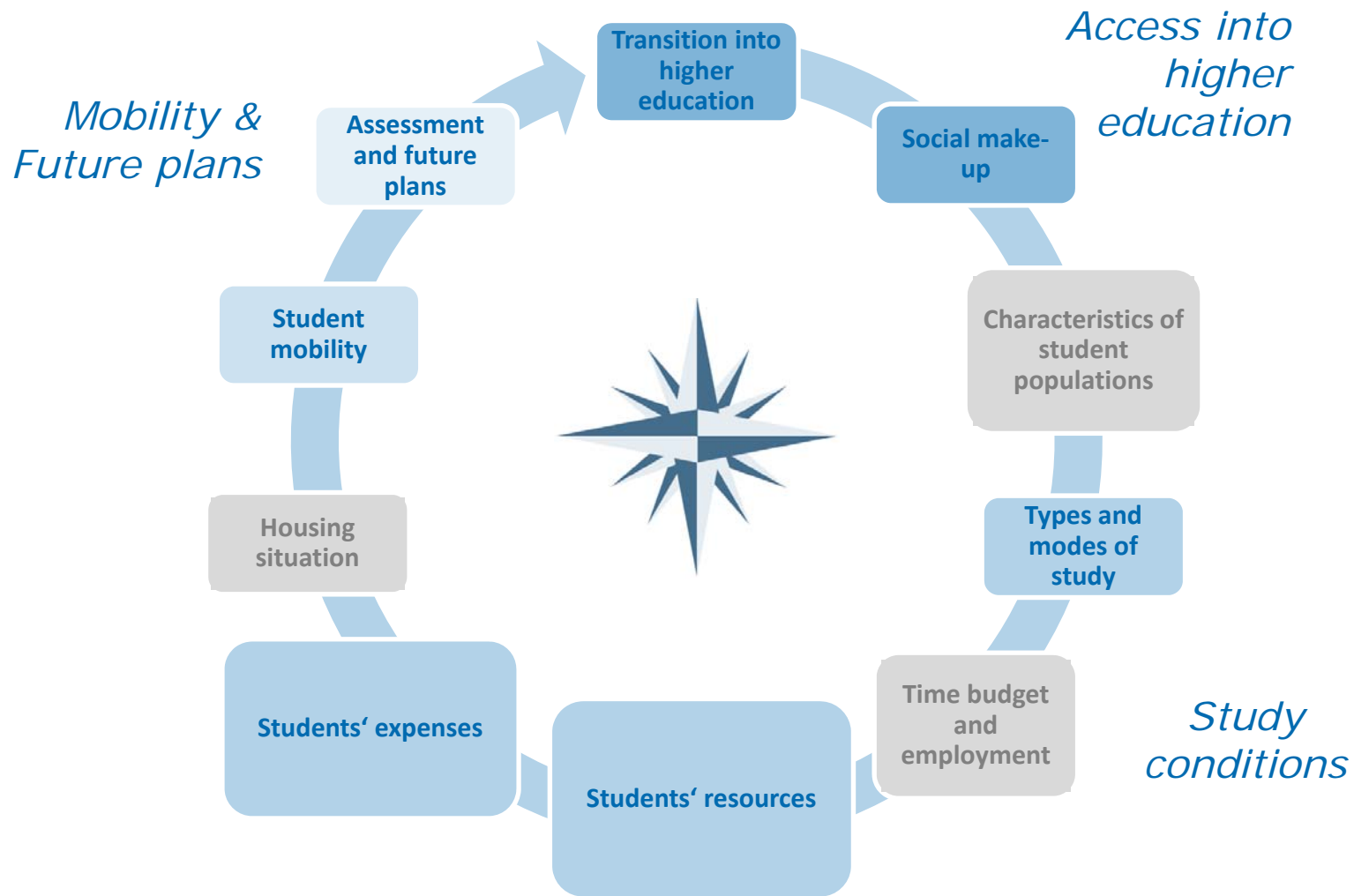
Students' enrolment in part-time study programmes by type of programme

Share of students (in %)



Source: Hauschildt et al. (2015)

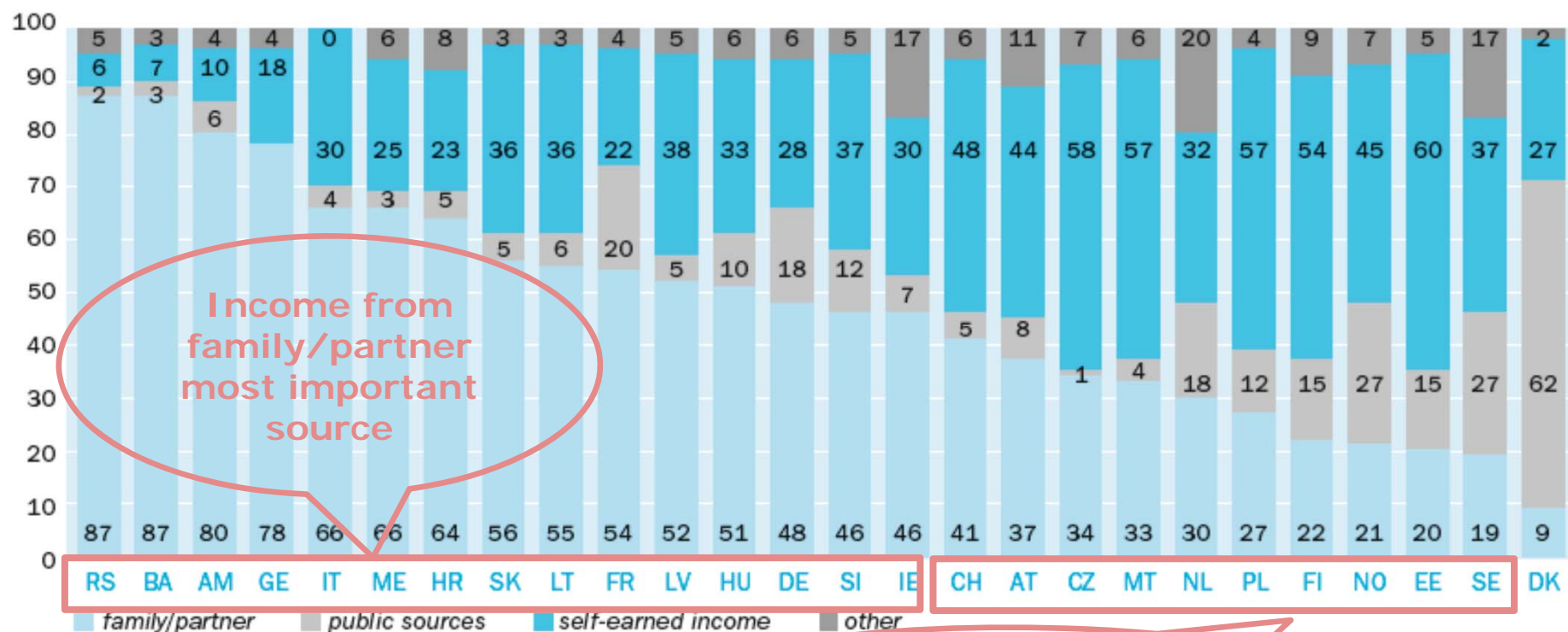
Synopsis of Indicators



Composition of students' income – students not living with parents

Total monthly income including transfers in kind

Source of income (in %)

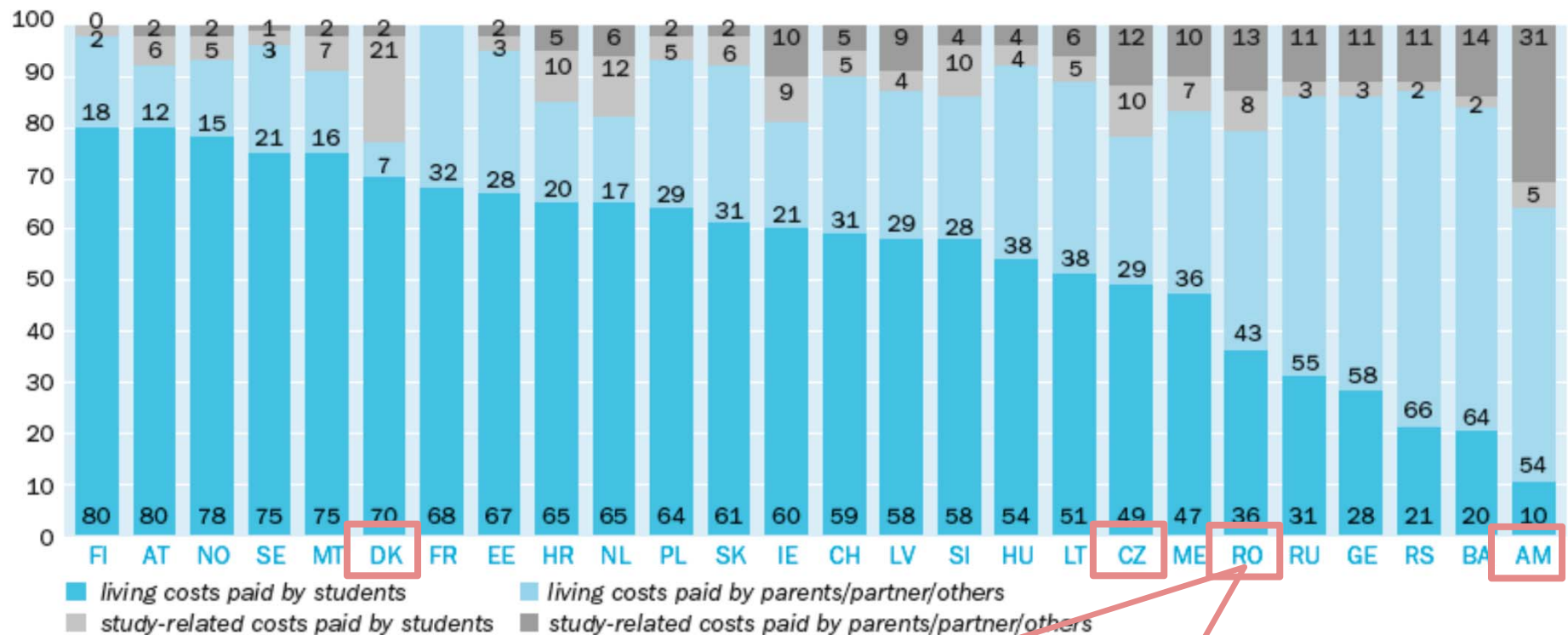


Source: Hauschildt et al. (2015)

Composition of students' expenditure by payer and type of housing

Living costs and study-related costs as share of total monthly expenditure – students not living with parents

Total monthly expenditure (in %)

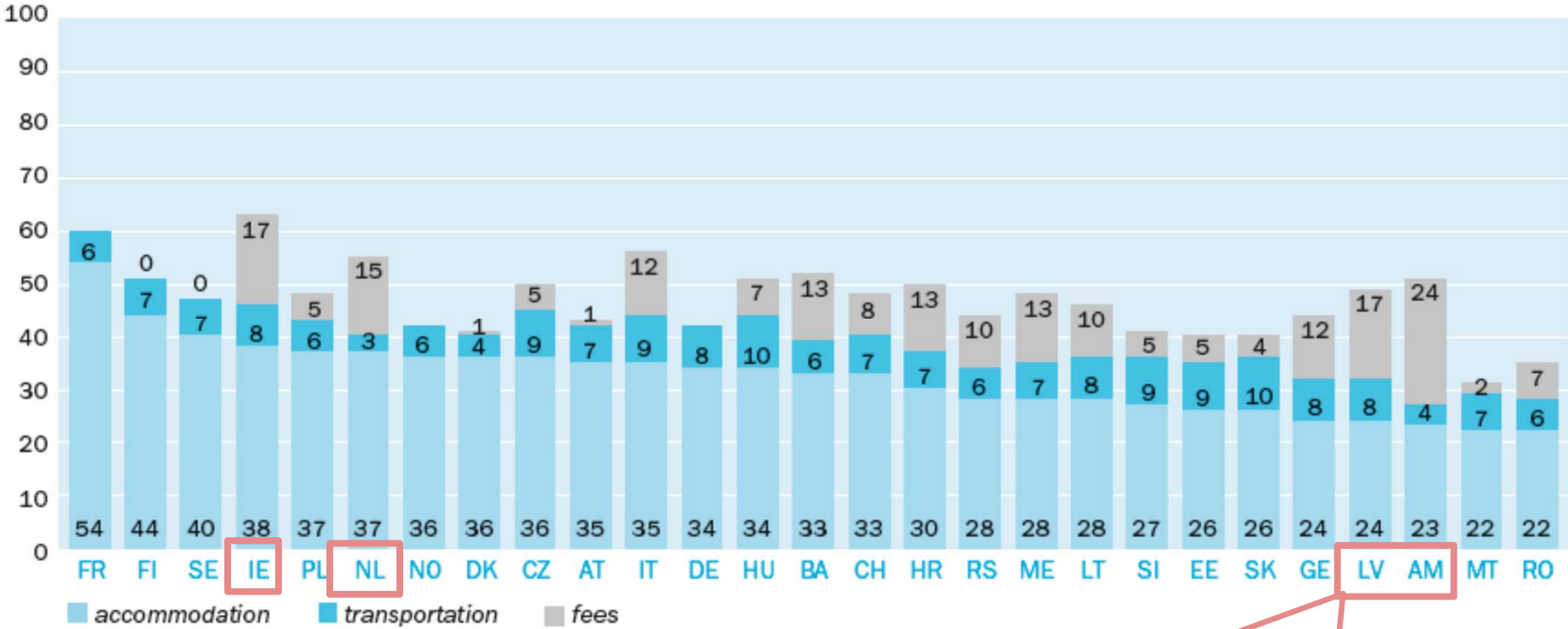


Source: Hauschildt et al. (2015)

Study-related costs make up at least 20% of total expenditure

Profile of Bachelor students' key expenditure – students not living with parents

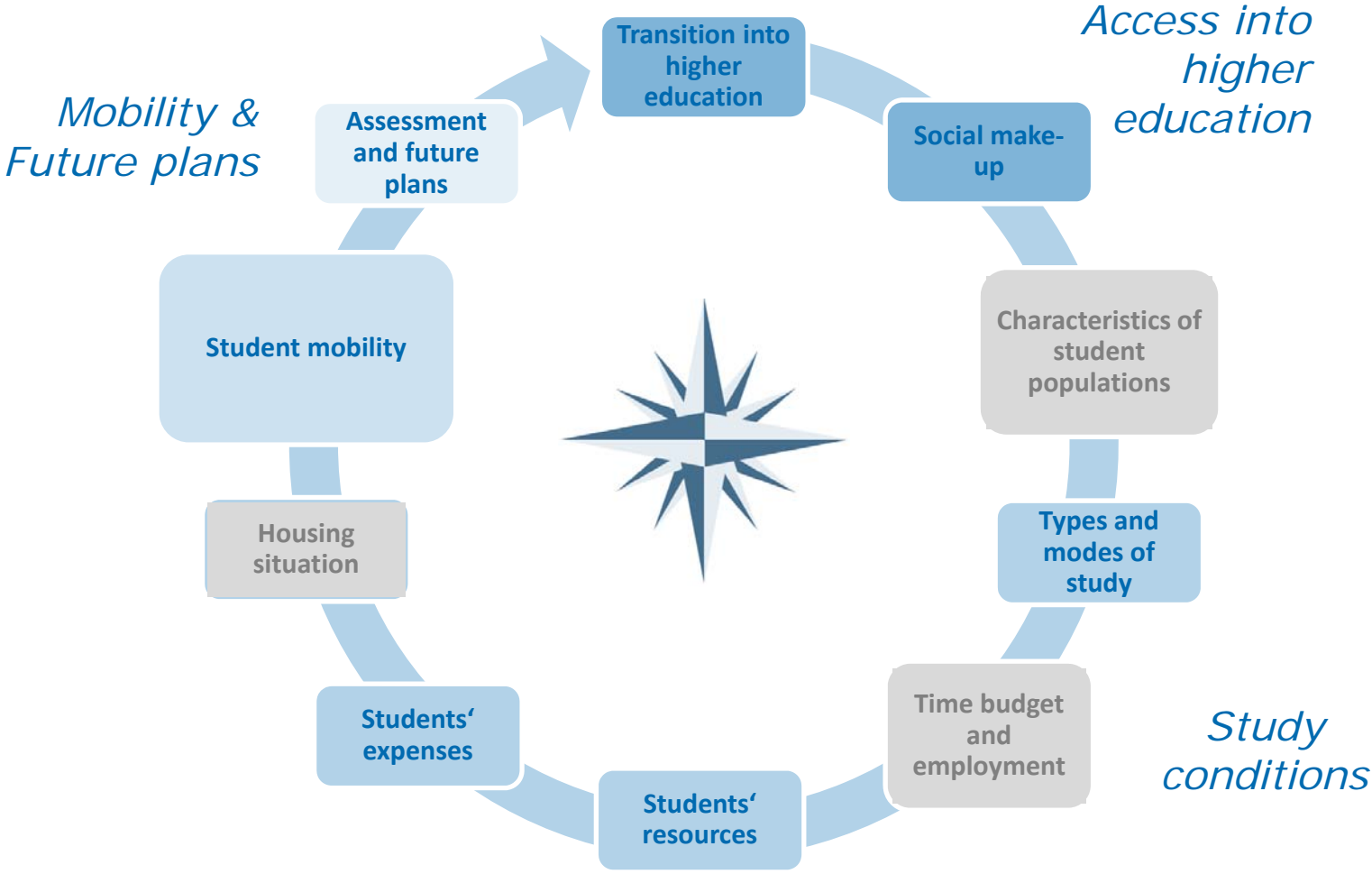
Expenditure paid by students and parents/partner/others
Share of total monthly expenses (in %)



Accommodation major expense in most countries

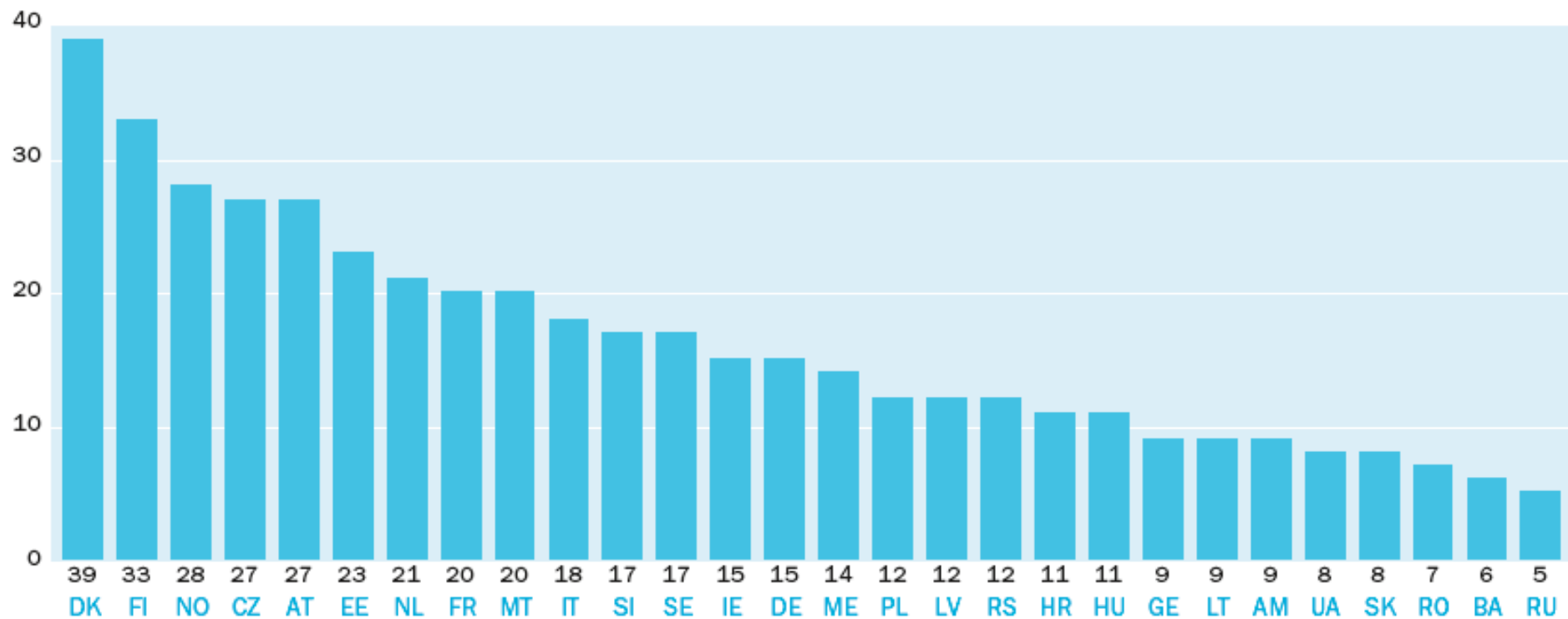
Fees make up at least 15% of students' expenses

Synopsis of Indicators



International student mobility rates

Students who realised a temporary study-related experience abroad
Share of students (in %)

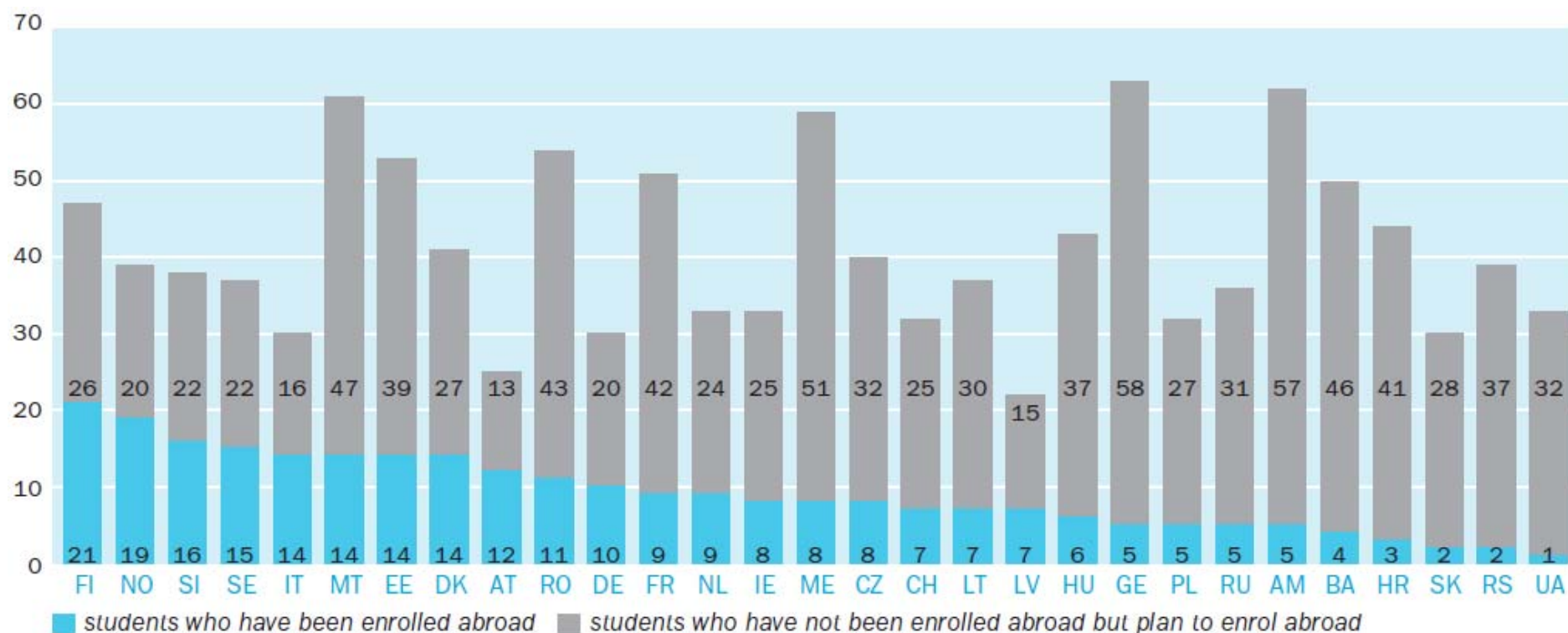


Source: Hauschildt et al. (2015, p. 191)

Social selectivity of international mobility

Foreign enrolment rates by educational background

Share of students **with** higher education background (in %)

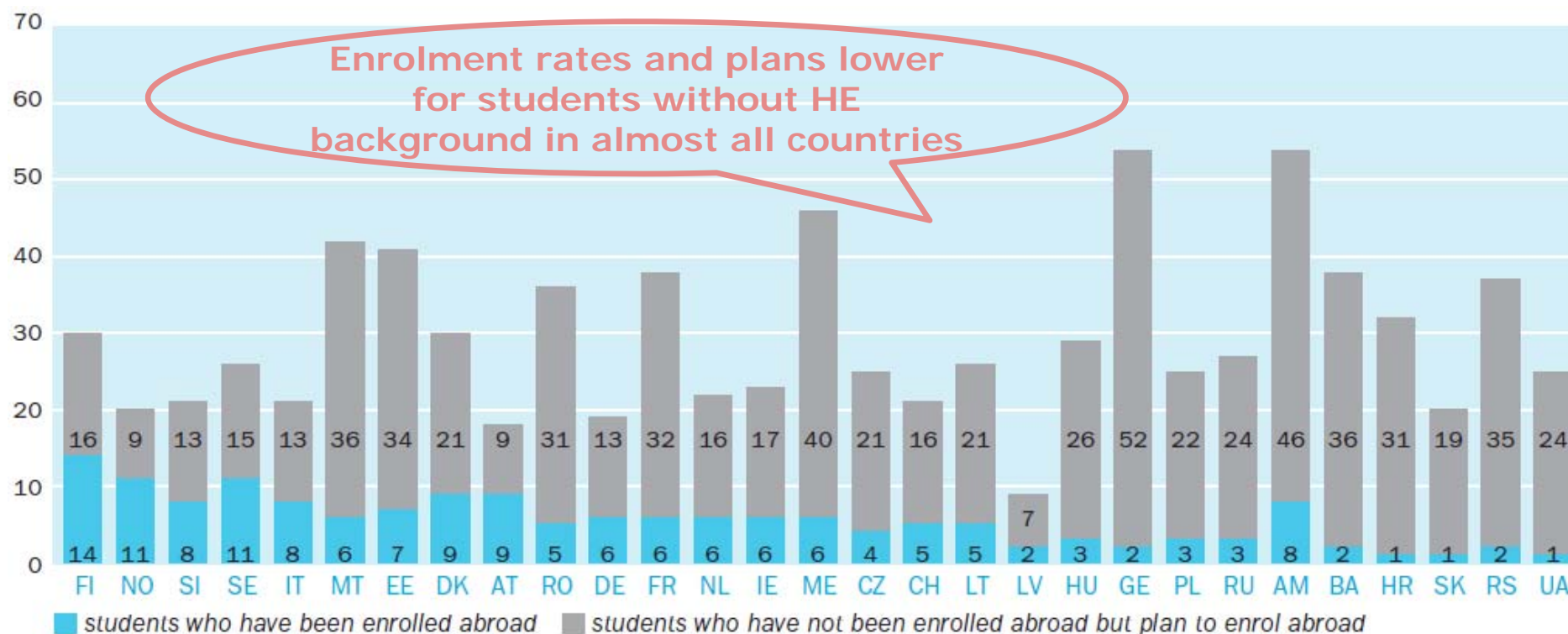


Source: Hauschildt et al. (2015, p. 193)

Social selectivity of international mobility

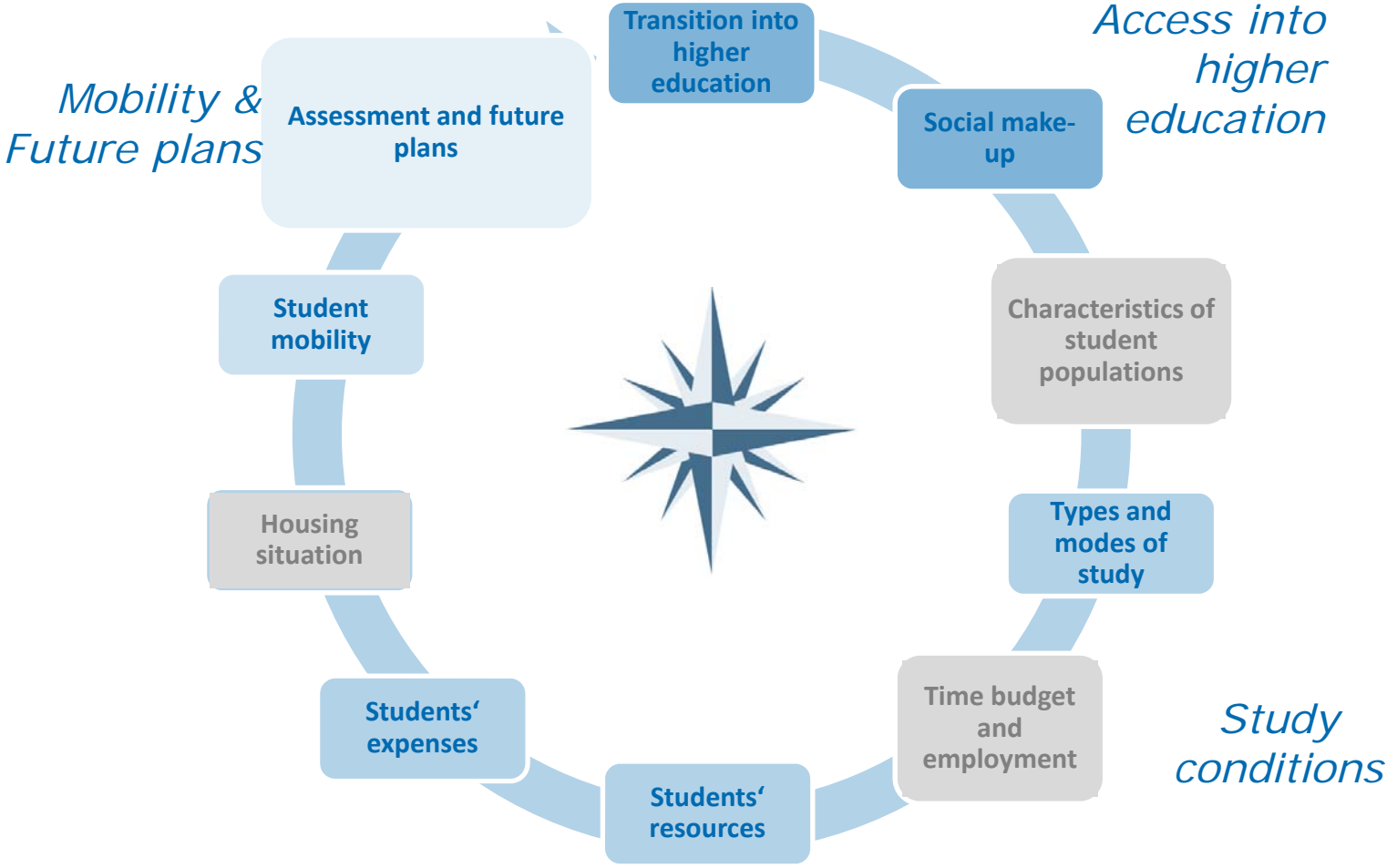
Foreign enrolment rates by educational background

Share of students **without** higher education background (in %)



Source: Hauschildt et al. (2015, p. 193)

Synopsis of Indicators

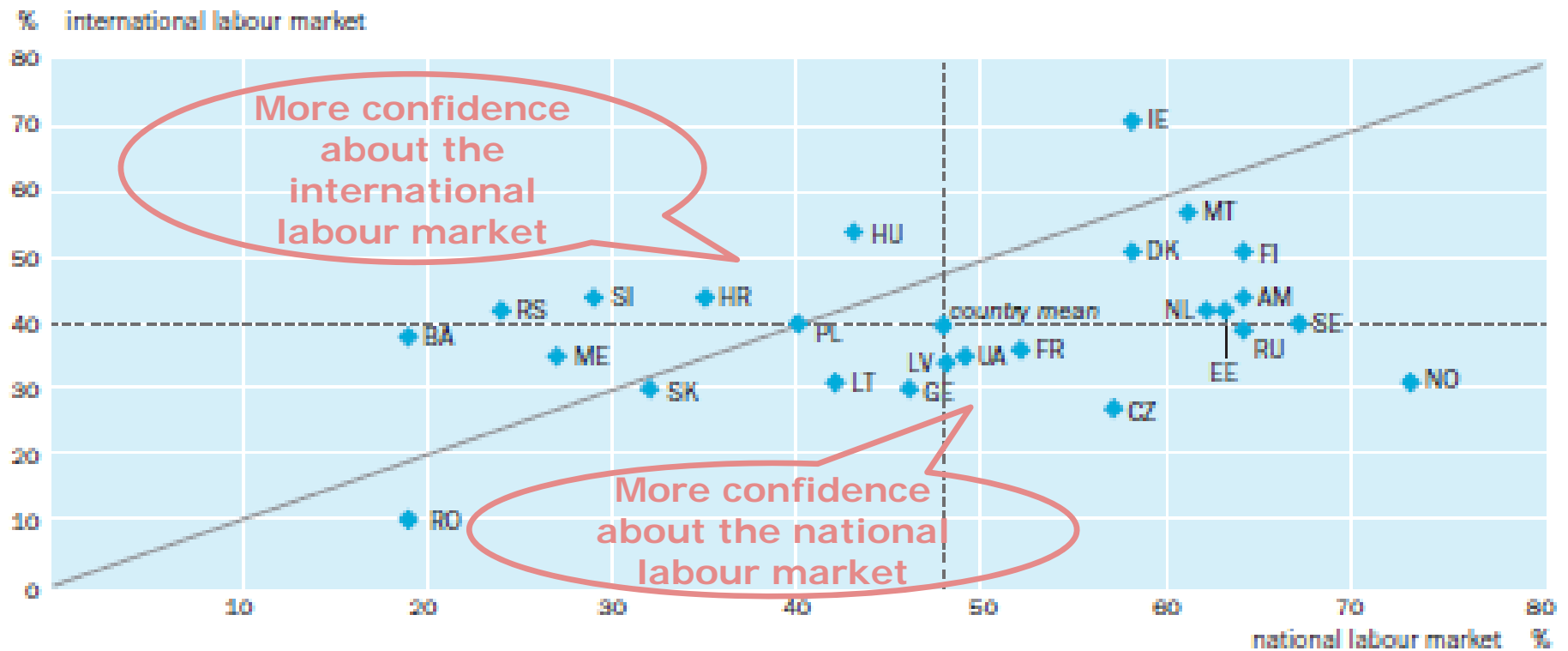


Chances on the labour market

Students' assessment of their chances on the (national vs. international) labour market

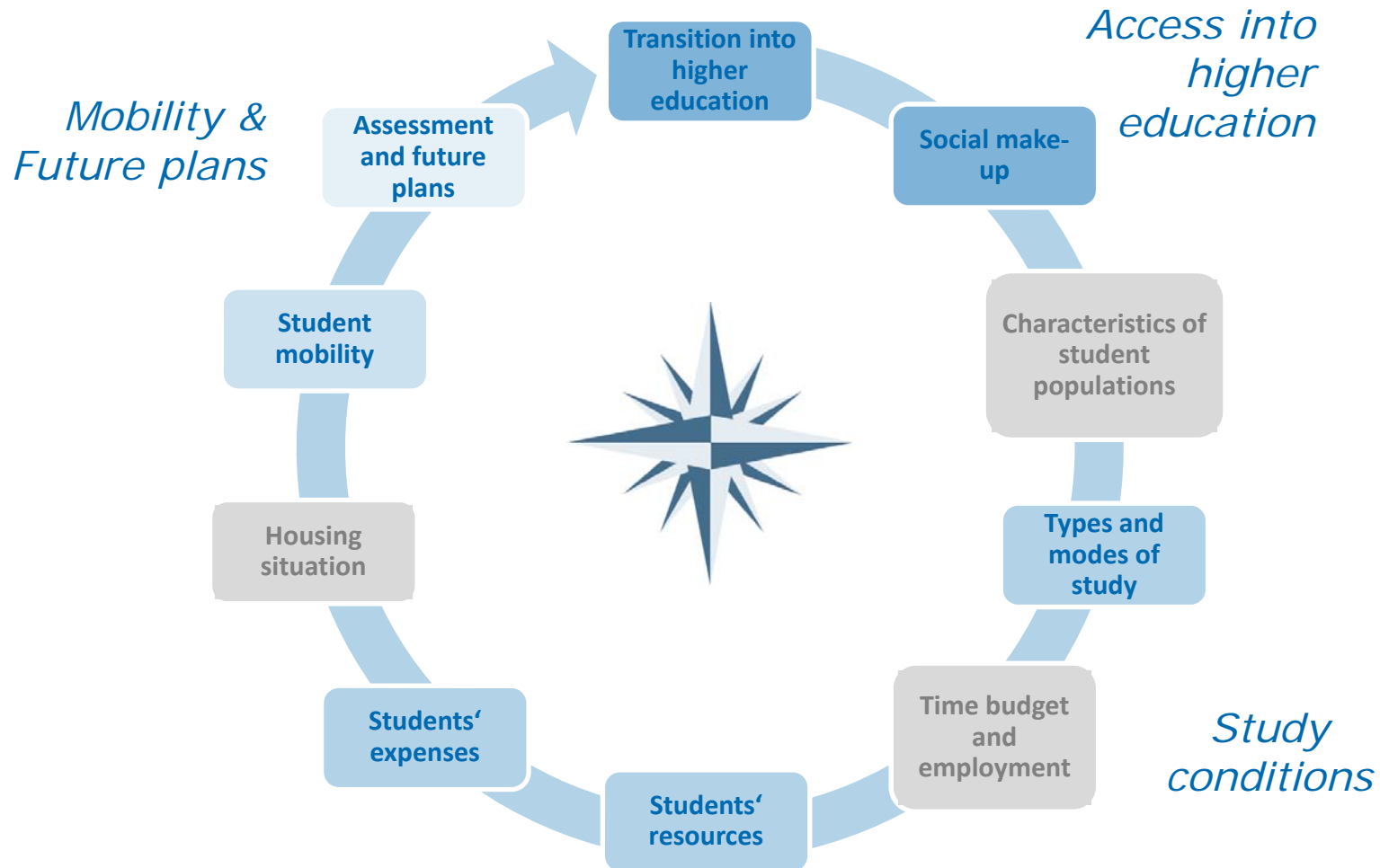
Students' assessment of their chances on the (national vs. International) labour market

Share of students assessing their chances on the labour market as (very) good (in %)

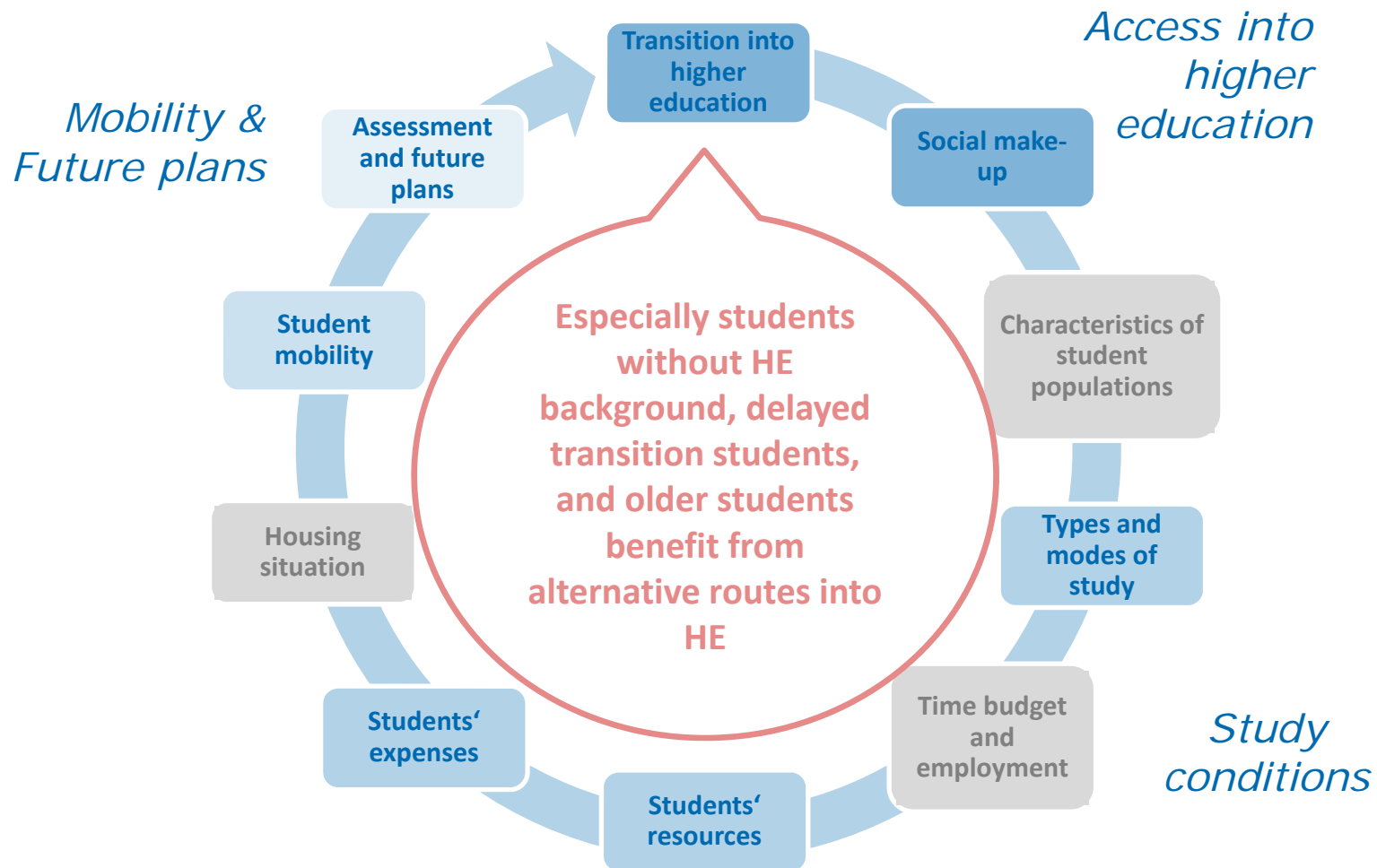


Source: Hauschildt et al. (2015)

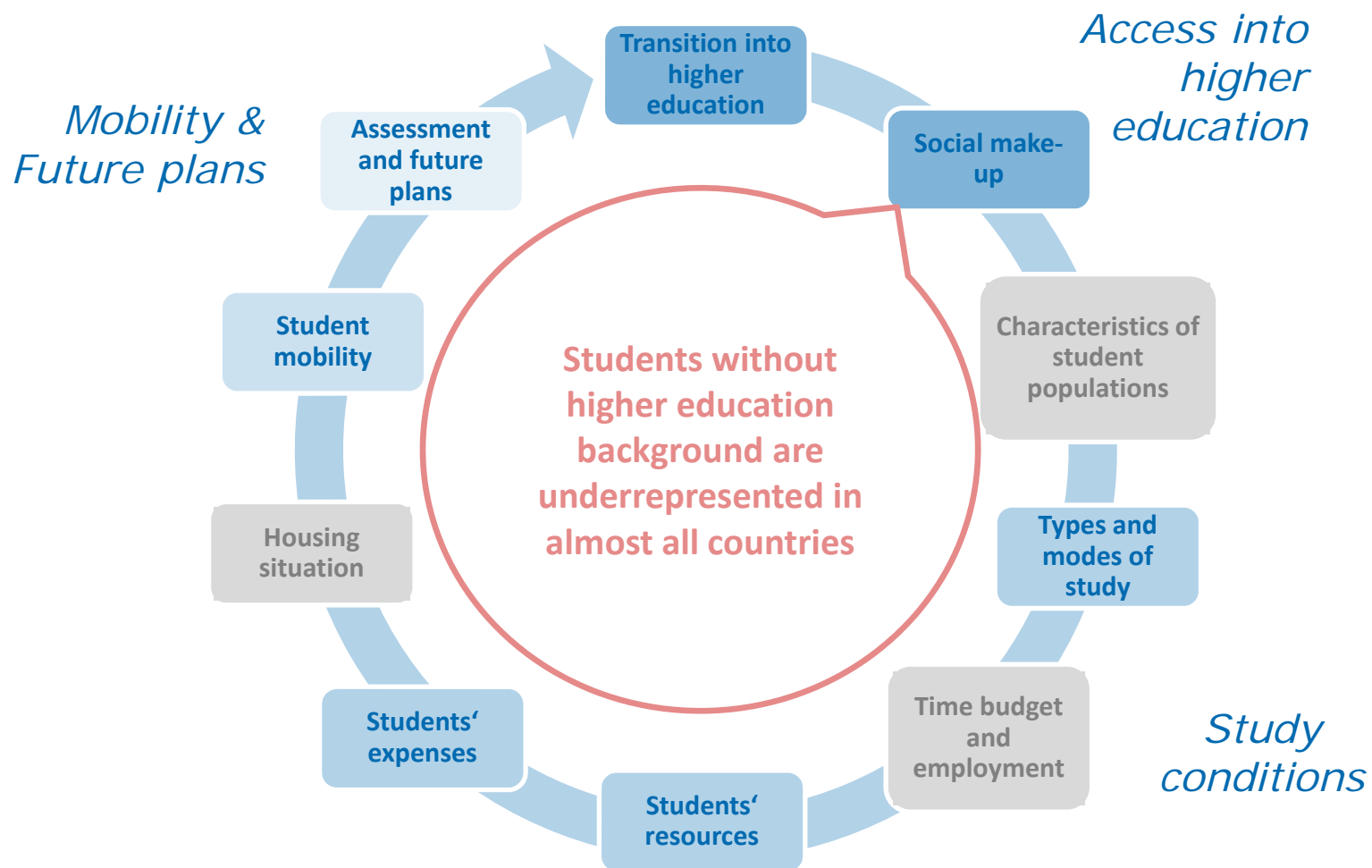
Synopsis of Indicators



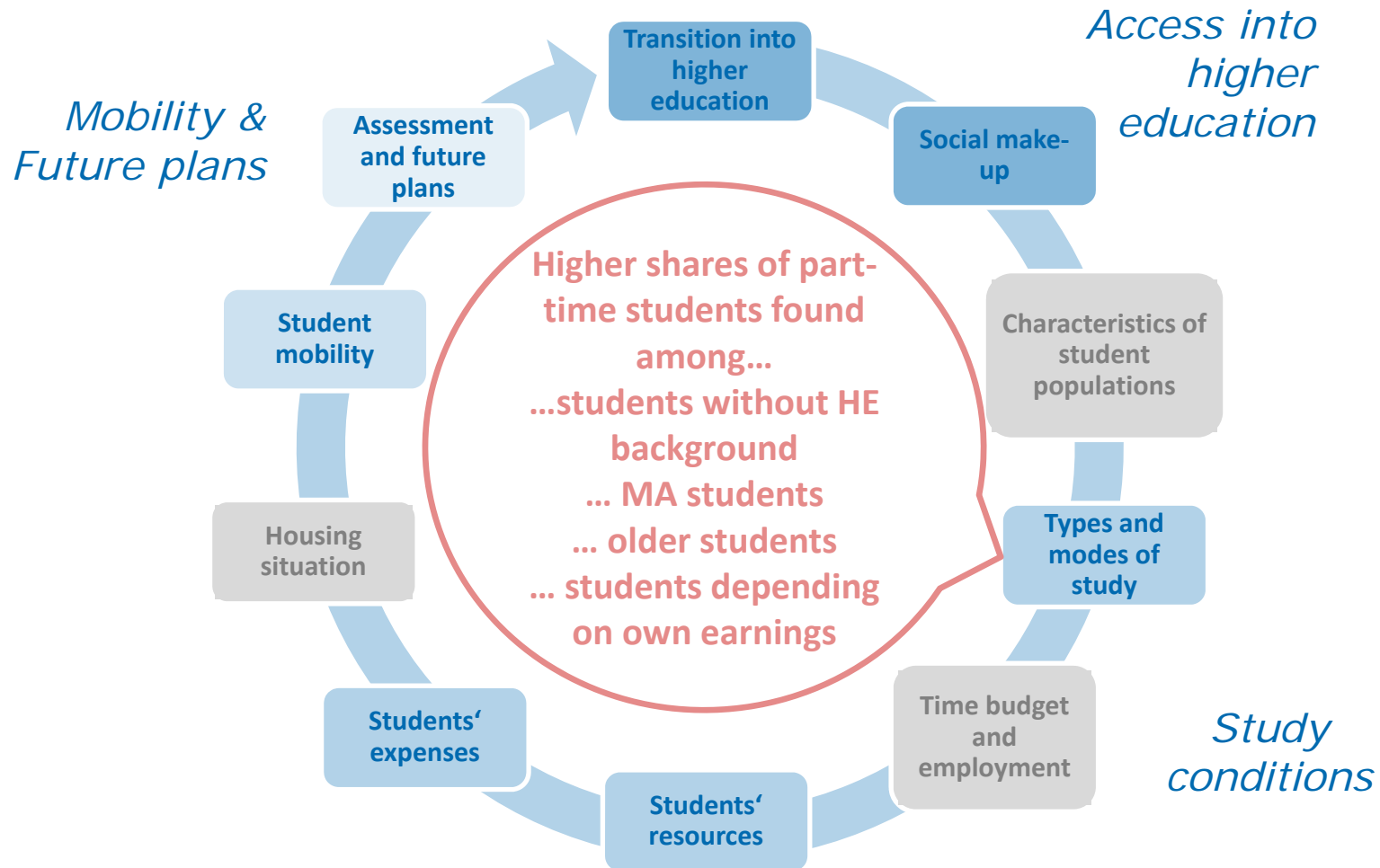
Synopsis of Indicators



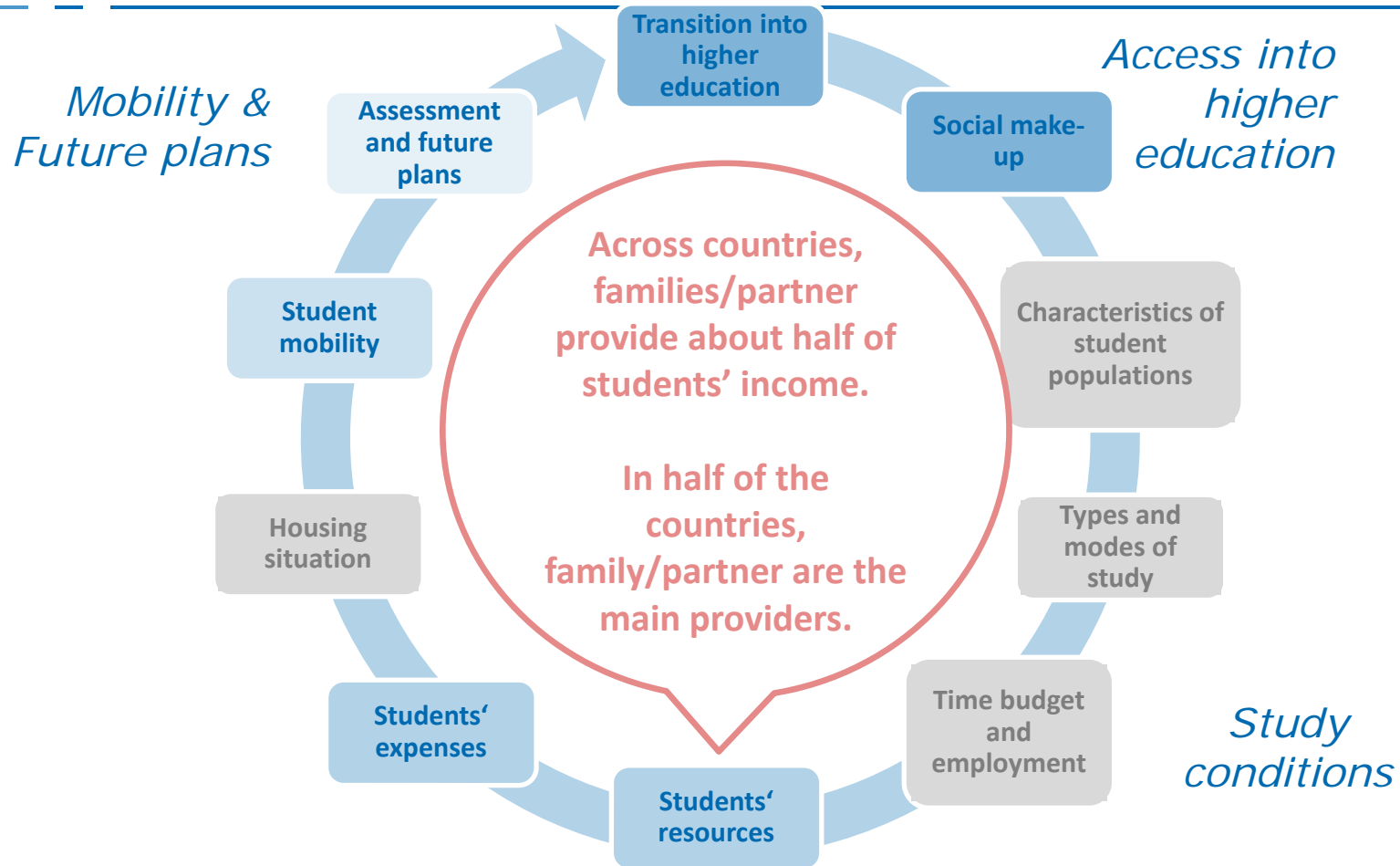
Synopsis of Indicators



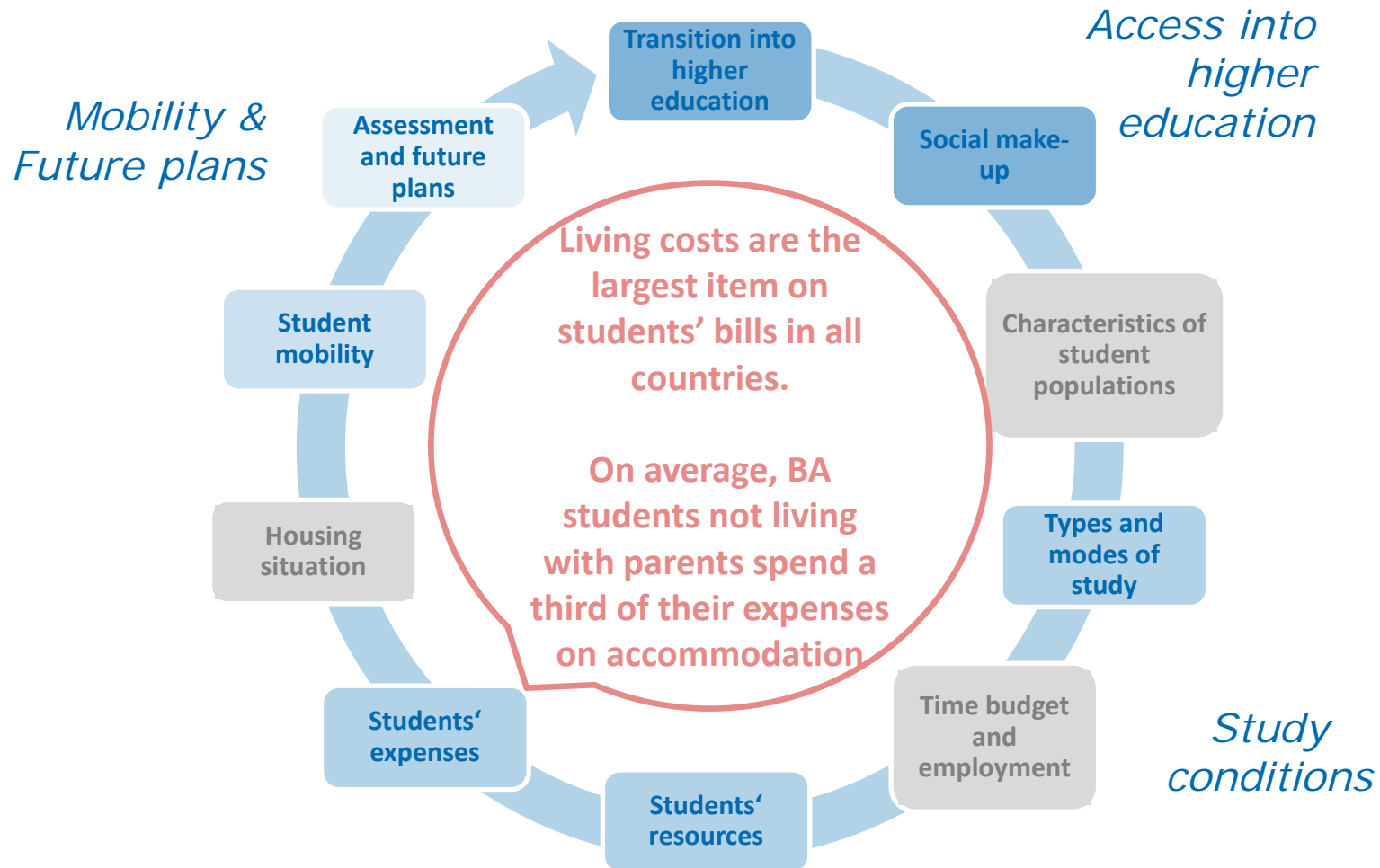
Synopsis of Indicators



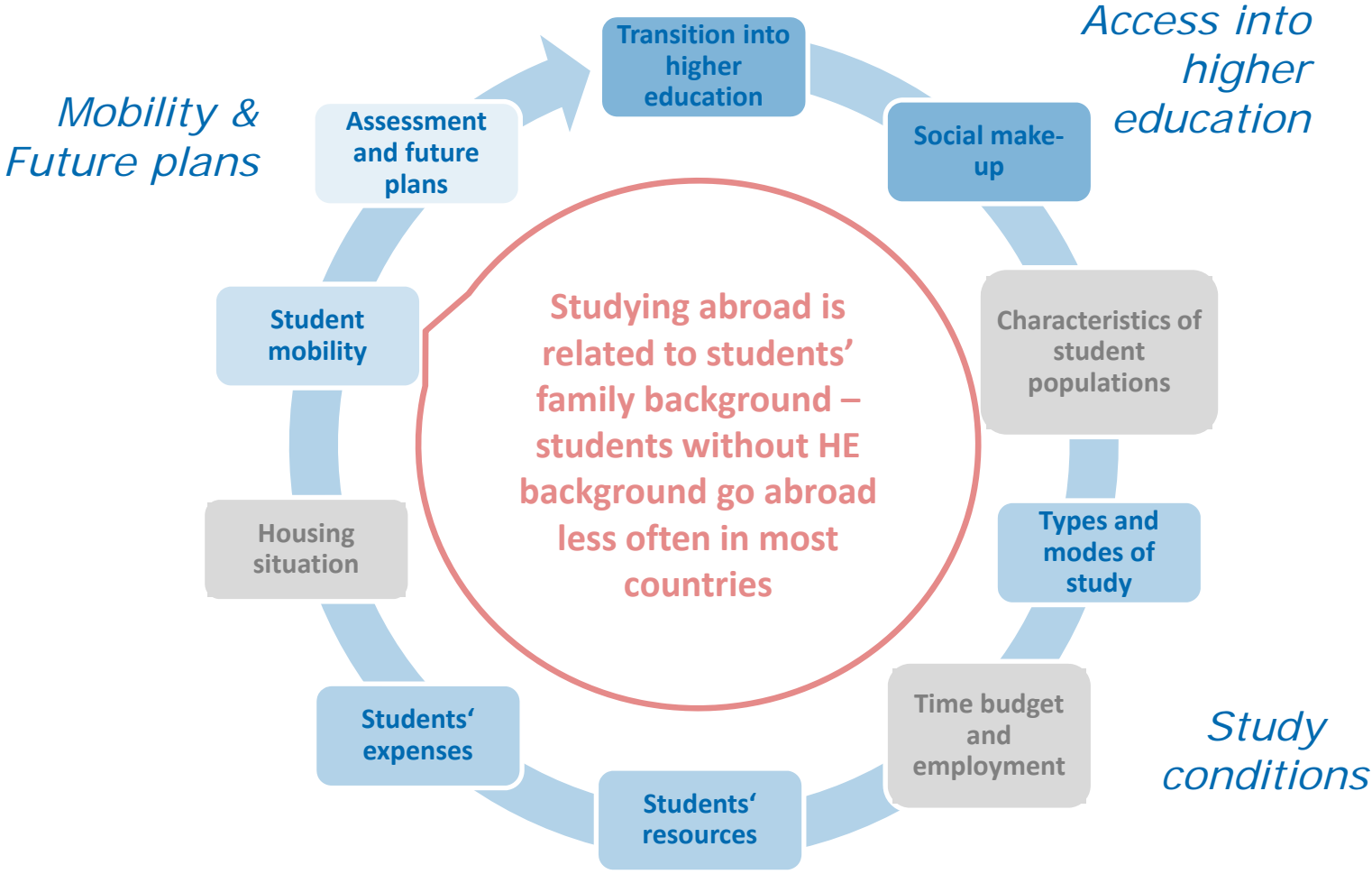
Synopsis of Indicators



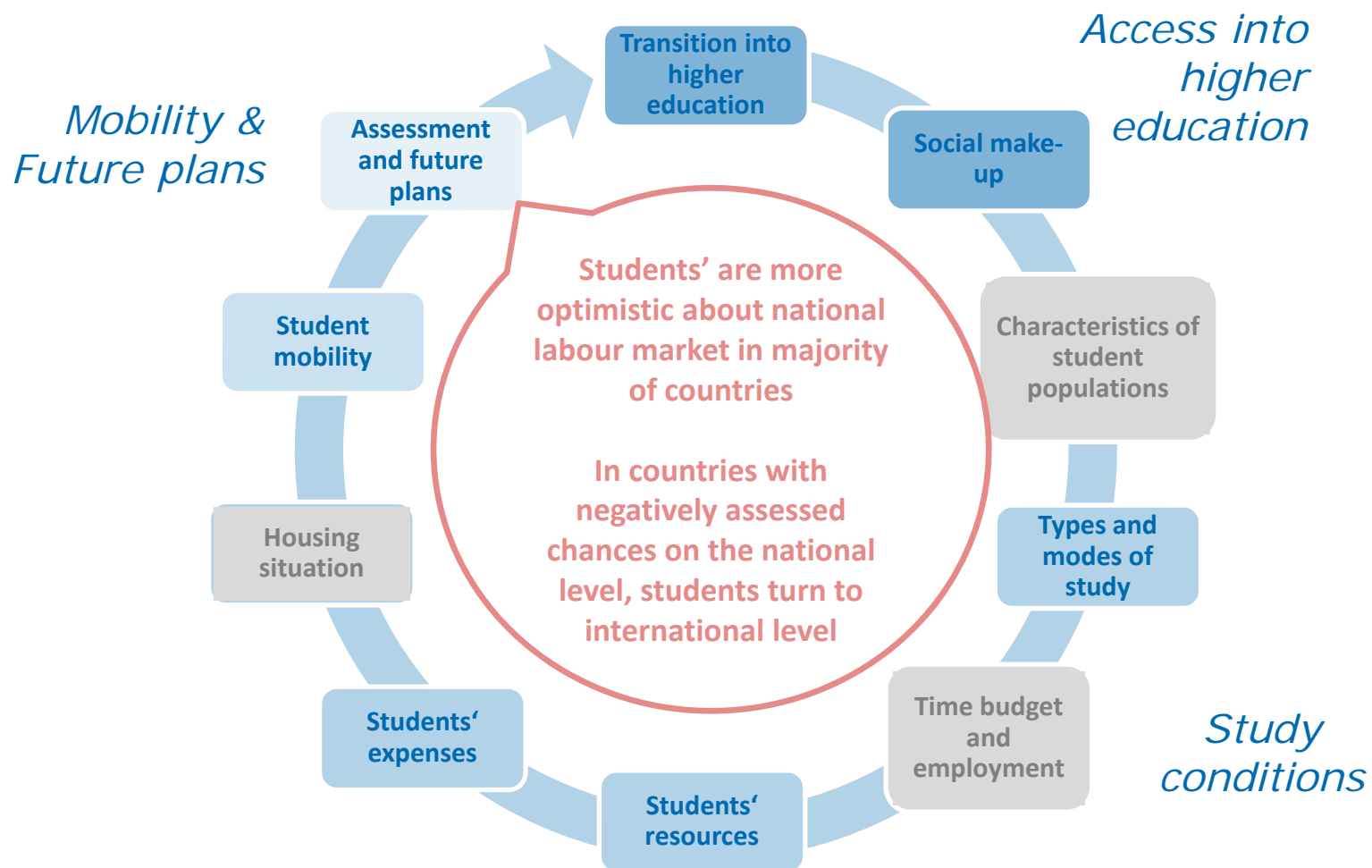
Synopsis of Indicators



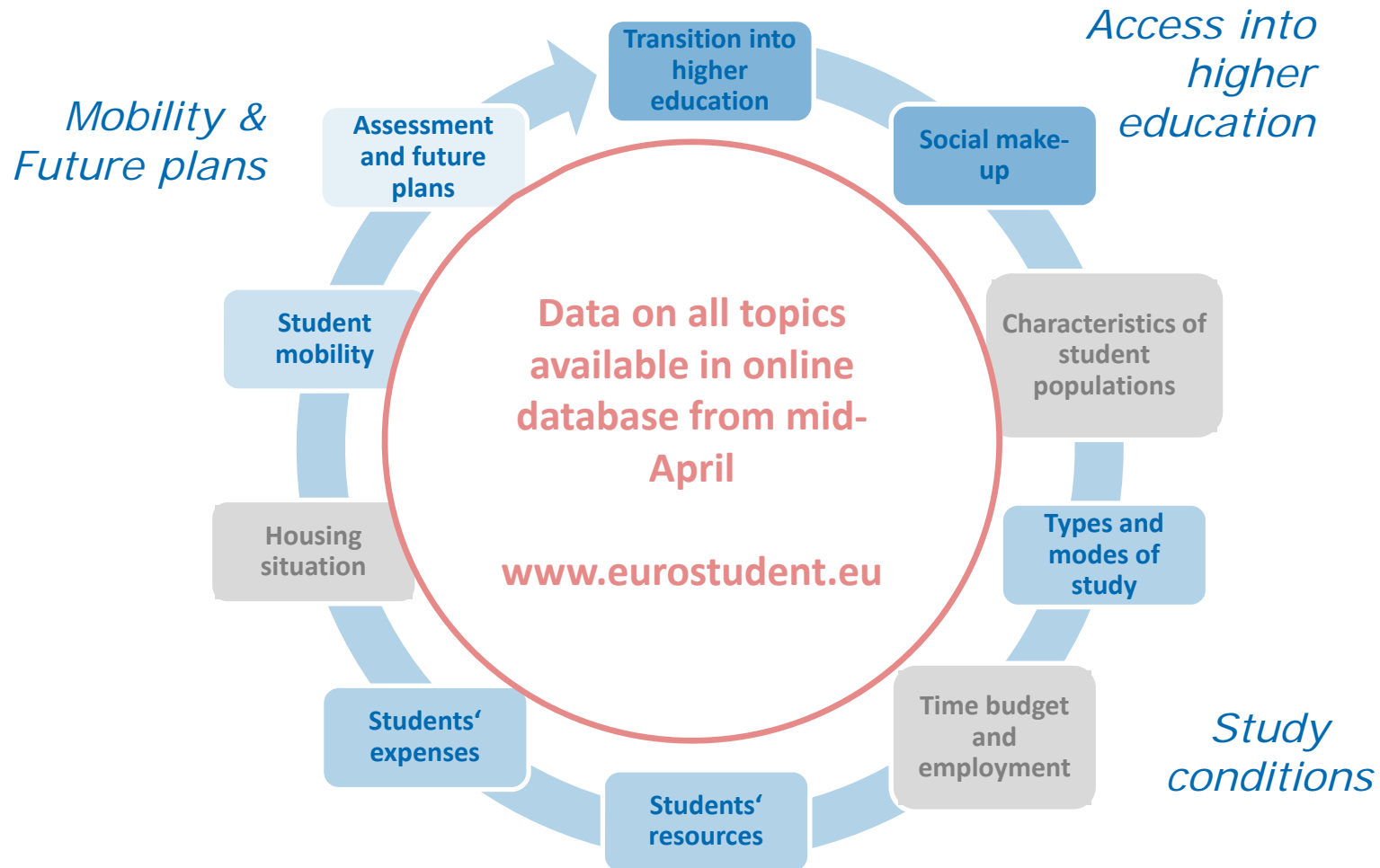
Synopsis of Indicators



Synopsis of Indicators



Synopsis of Indicators



eurostudent



Full database available
mid-April
www.eurostudent.eu

news

Vienna, Austria, 25 - 27 February 2015

E:V results at the SD in HE conference and EUROSTUDENT VI pre-kick-off

E:V results were presented at the SD in HE conference to around 250 participants. The conference ended with a EUROSTUDENT VI pre-kick-off bringing together representatives from interested countries looking forward to EUROSTUDENT VI.

▶ [see photo](#)

Vienna, Austria, 25 - 27 February 2015

Final EUROSTUDENT Conference to launch the new comparative report

Surveys from 29 European countries and a sum of 210 thousand students have been brought together to provide a comparative perspective on student life in Europe. Join us 25-27 Feb. to find out more.

▶ [webpage](#)

Tallinn, Estonia, 15 January 2015

EUROSTUDENT teaser campaign

There are major differences between student populations in Europe - follow the campaign and guess which countries the data highlight.

▶ <https://twitter.com/eurostudenttw>

Follow us on 

events

Add country +

- Croatia ✖
- Denmark ✖

Choose topic ≡

TOPIC:

A Demographics

SUBTOPIC:

A 7 Dependents by characteristics of students (I)

Purpose for subtopic

Students with children are a special student group as they are usually under an additional burden of having to care for their children. This may leave them with less time and resources to devote towards their studies than their childless counterparts. The EUROSTUDENT core questionnaire stipulates that students are to be asked to indicate whether they have any

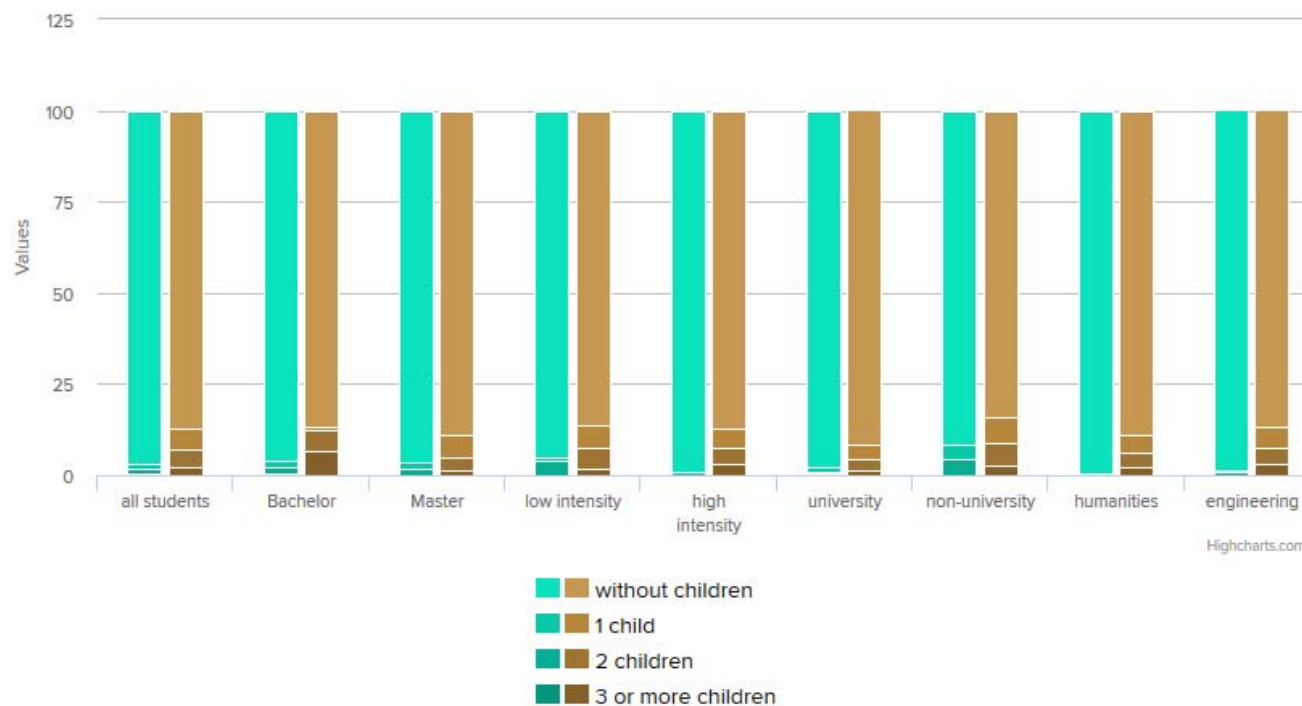
A Demographics

A 7 Dependents by characteristics of students (I)

Source: Survey question 5.5, 5.6

XLS

Students with children by study-related characteristics of students



Students with children by study-related characteristics of students

	all students	all students	Bachelor	Bachelor	Master	Master	low intensity	low intensity
	numbers	percent	numbers	percent	numbers	percent	numbers	percent

Using EUROSTUDENT materials

- **Synopsis of Indicators** 
 - Freely available
 - Free to disseminate
 - Free to use – please cite!
- **EUROSTUDENT data in DRM**
 - Custom graphics
 - Free to download (Excel format)
 - National profiles
- **Use it, analyse it, share it, publish it...**



www.eurostudent.eu

→ database



Lifelong
Learning
Programme

eurostudent.eu
★★★★★

DZHW

Deutsches Zentrum für
Hochschul- und Wissenschaftsforschung ■